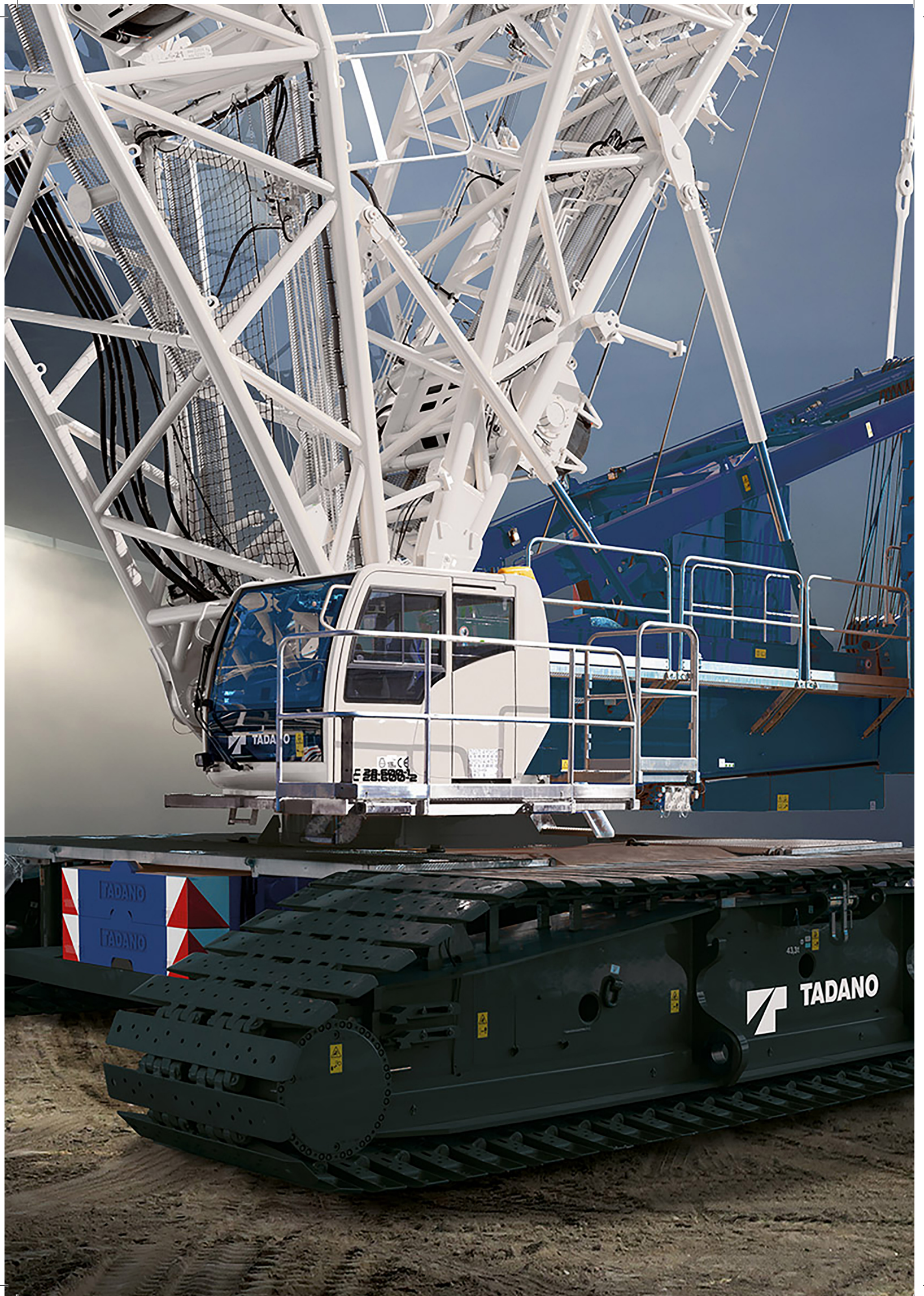


A detailed white line drawing of a crawler crane, showing the lattice boom, counterweight, and crawler chassis, set against a blue background.

**BUILD MANUAL**  
**TADANO CC 2800-1**

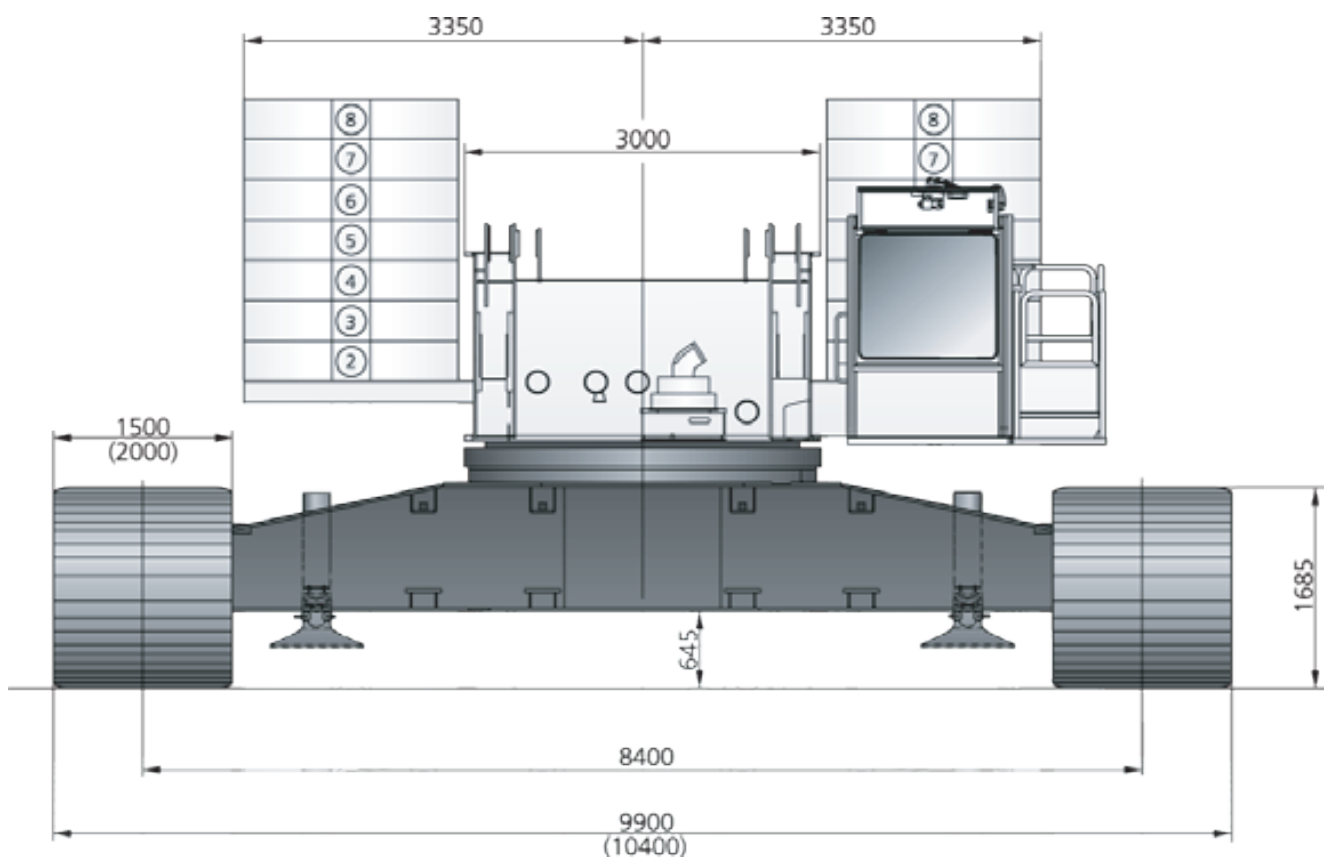
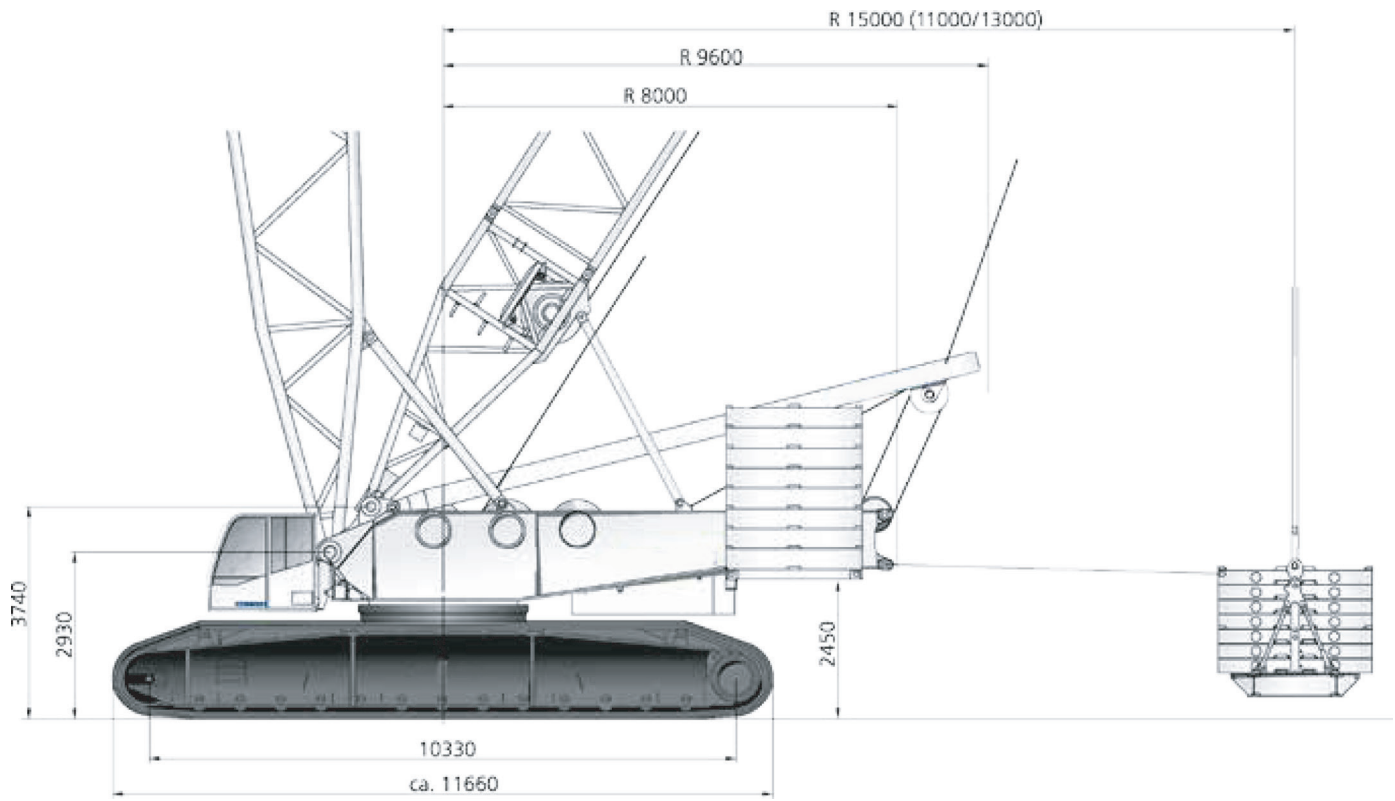


TADANO

CE  
E 28.636-2

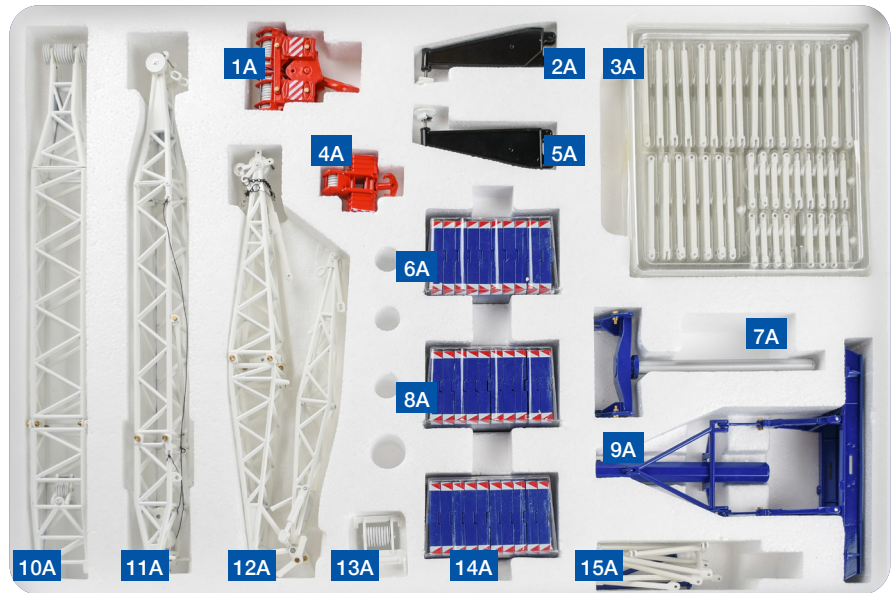
TADANO  
TADANO

TADANO

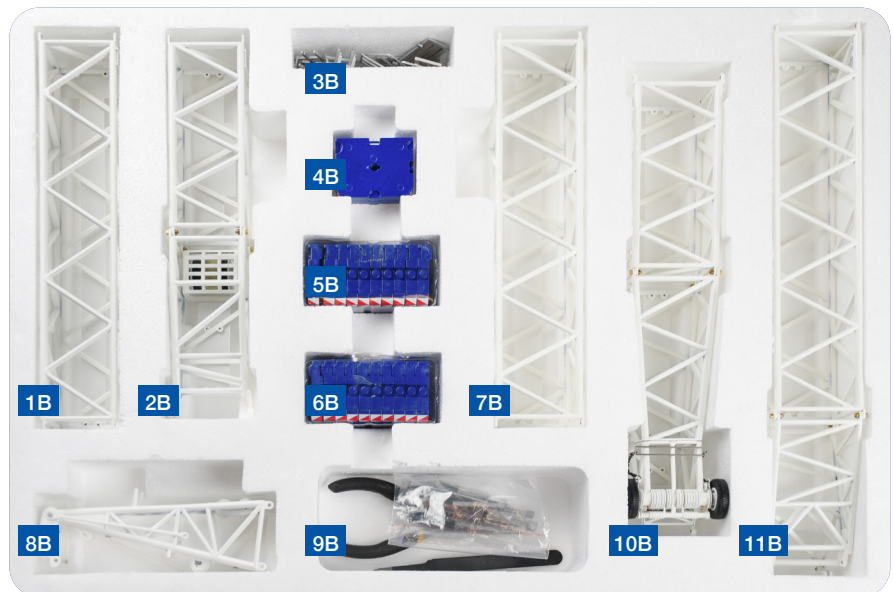


# MODEL CONTENT

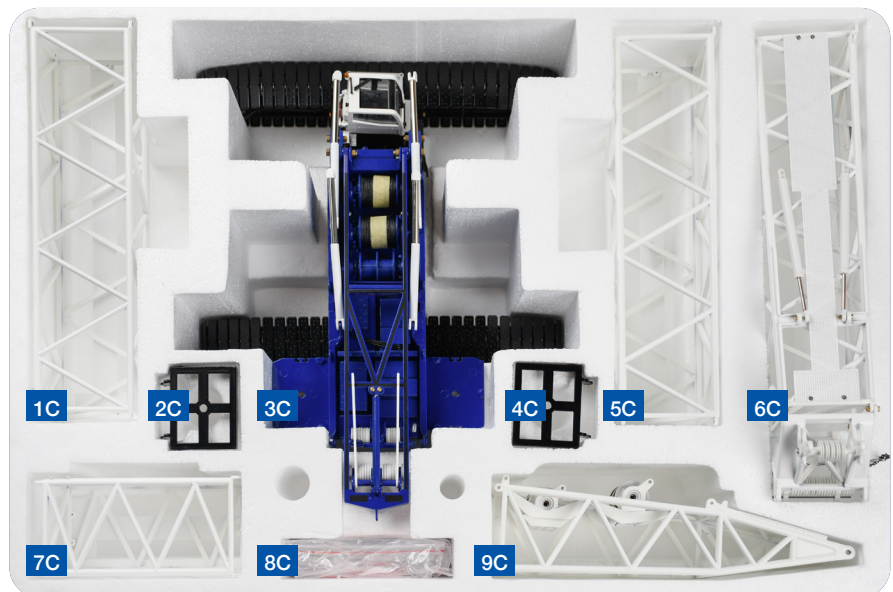
## TRAY A



## TRAY B



## TRAY C



## TRAY A

- 1-A** 600t Hook Block
- 2-A** Front Outrigger A
- 3-A** Pendant lines
- 4-A** 150t Hook Block
- 5-A** Front Outrigger B
- 6-A** Counterweight
- 7-A** SL Stinger
- 8-A** Counterweight
- 9-A** SL Tray
- 10-A** Upper Strut
- 11-A** Lower Strut
- 12-A** LF2 Jib
- 13-A** Bridle
- 14-A** Counterweight
- 15-A** Trapezium Stays

## TRAY B

- 1-B** Backmast 12m Section
- 2-B** Backmast 6m +  
Foot Section
- 3-B** Catwalks
- 4-B** Counterweight
- 5-B** Counterweight
- 6-B** Counterweight
- 7-B** 12m Luffing Jib Section
- 8-B** Backmast Top section
- 9-B** Tools
- 10-B** 6m Luffing Jib Section  
+ 300t Jib Top Section
- 11-B** 12m Luffing Jib Section  
+ Foot Section

## TRAY C

- 1-C** 12m Main Boom Section
- 2-C** Central Counterweight  
Tray A
- 3-C** Base Crane with  
Crawler Tracks
- 4-C** Central Counterweight  
Tray B
- 5-C** 12m Main Boom Section
- 6-C** Reducer Section  
+ 600t Heavy Duty Head
- 7-C** 6m Main Boom Section
- 8-C** Nuts and Bolts
- 9-C** Main Boom Foot Section

## NUTS & BOLTS



# ACCESSORIES & PARTS

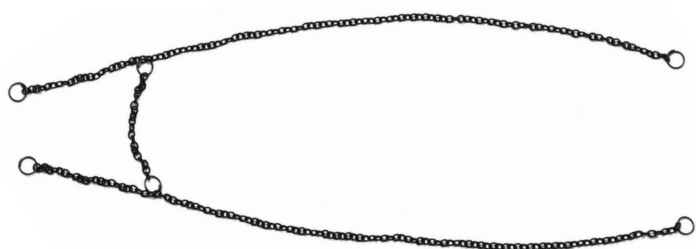
150T HOOK BLOCK



600T HOOK BLOCK



MID PENDANTS



8-SHAPE CONNECTORS



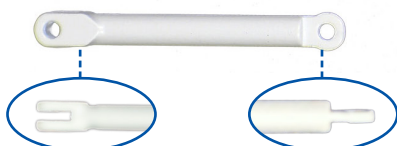
PL1



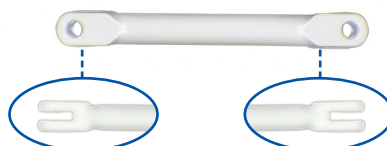
PL2



PL3



PL4



PL5



## ROPE



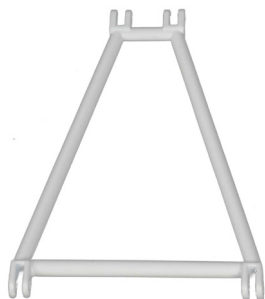
## COUNTERWEIGHT PINS



## TRAPEZIUM STAYS



2x Strut Trapezium



LF Jib Trapezium



Stinger-Tray Trapezium

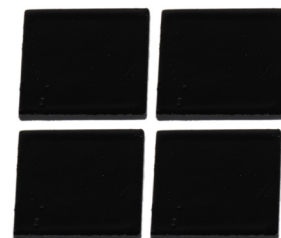


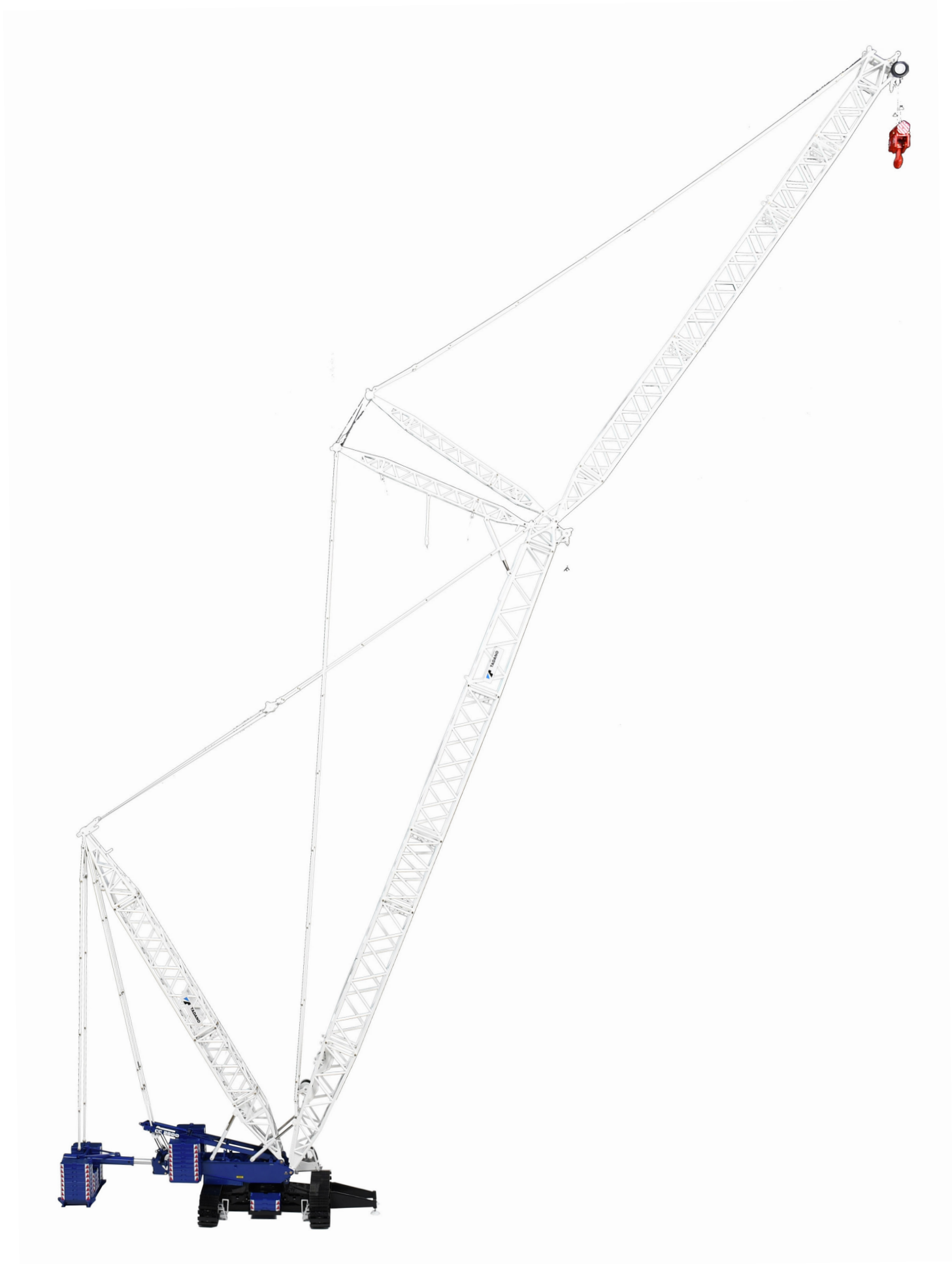
Mainboom Foot Section Trapezium

## FRONT OUTRIGGERS



## OUTRIGGER MATS



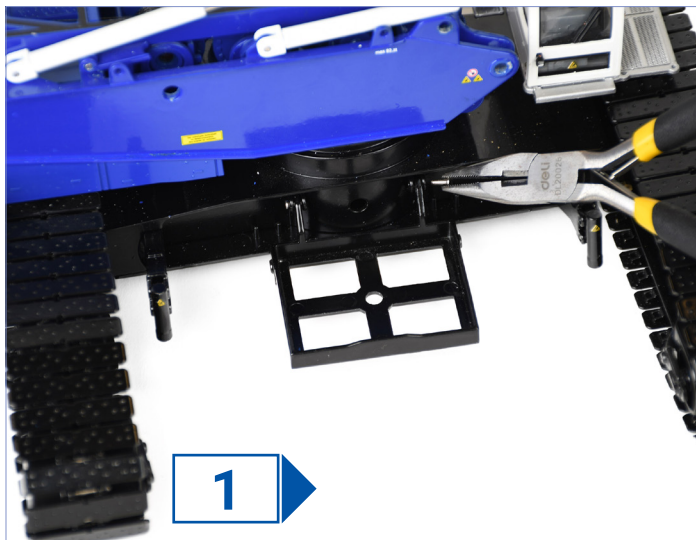
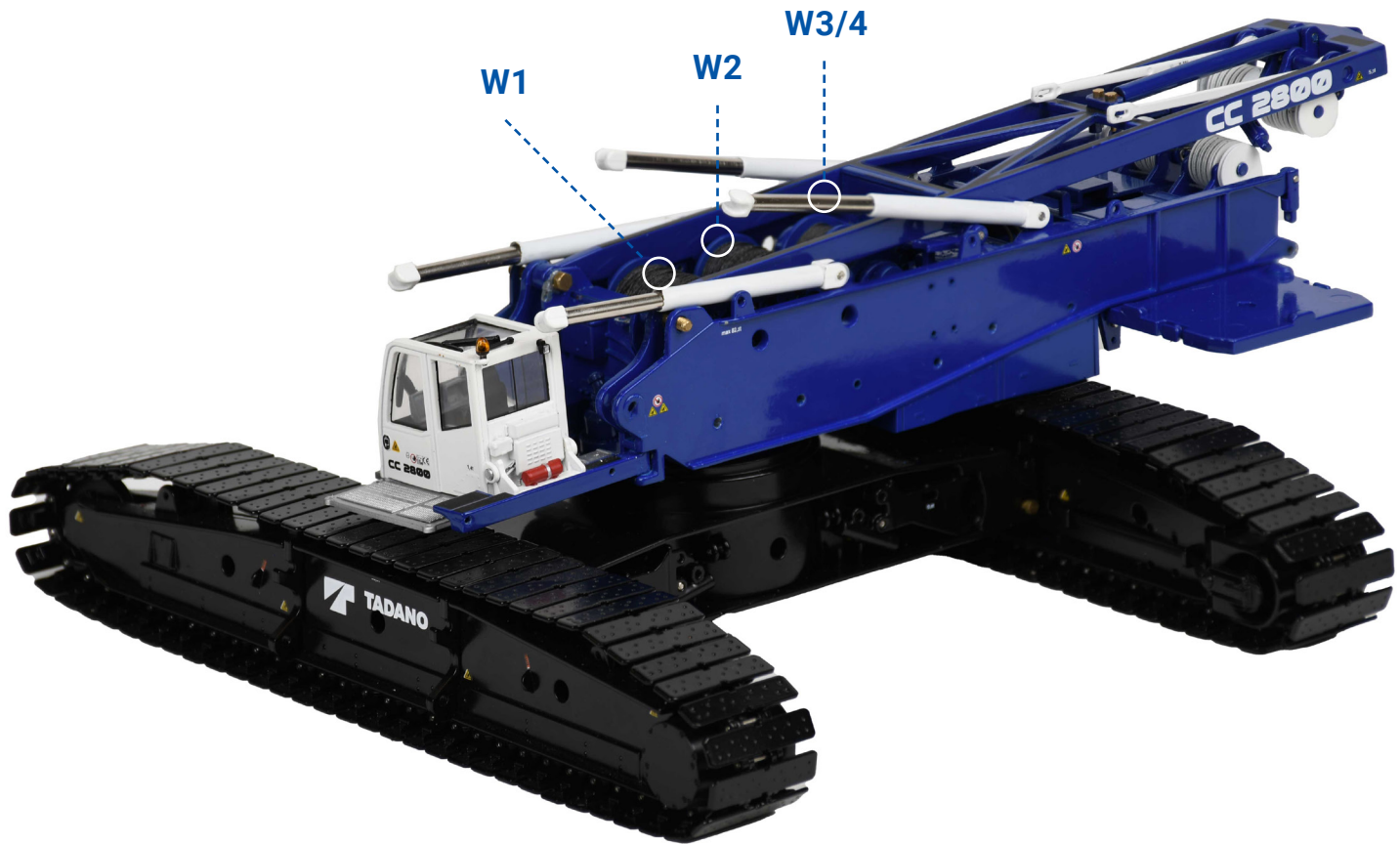


# **BUILD MANUAL**

## **LUFFING JIB CONFIGURATION.**

# CAR BODY

## And Upper Structure



PIN THE CENTRAL COUNTERWEIGHT TRAYS (2-C + 4-C) IN PLACE ON BOTH SIDES WITH PINS FROM BAG P1.



PLACE 3x 10T COUNTERWEIGHT ON EACH TRAY.

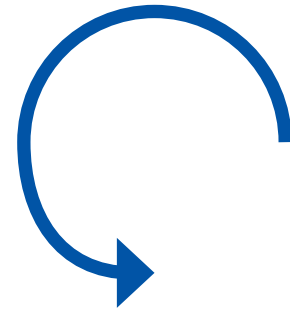
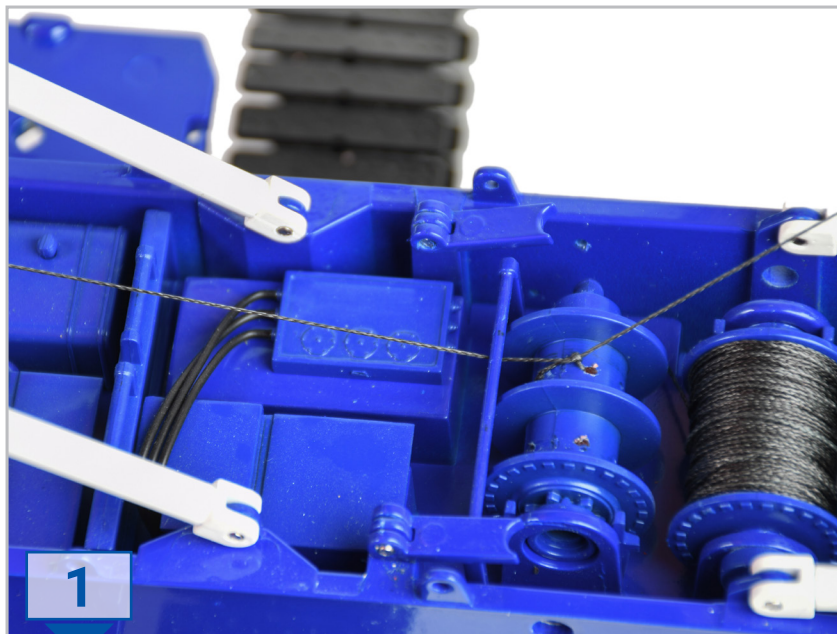


ASSEMBLE BOTH FRONT  
OUTRIGGERS ( 2-A + 5-A )  
BY HANGING THEM ON ONE OF  
THE TWO CRAWLER TRACKS AND  
SECURING THEM WITH B5 + N2



# REEVING

## A-frame



TAKE TWO EQUAL LENGTHS OF ROPE AND TIE THEM TO WINCH DRUM 3/4 VIA THE HOLE IN THE DRUMS.

WIND THE ROPE ON THE DRUMS BY TURNING THE WINCH KEY COUNTER CLOCKWISE.



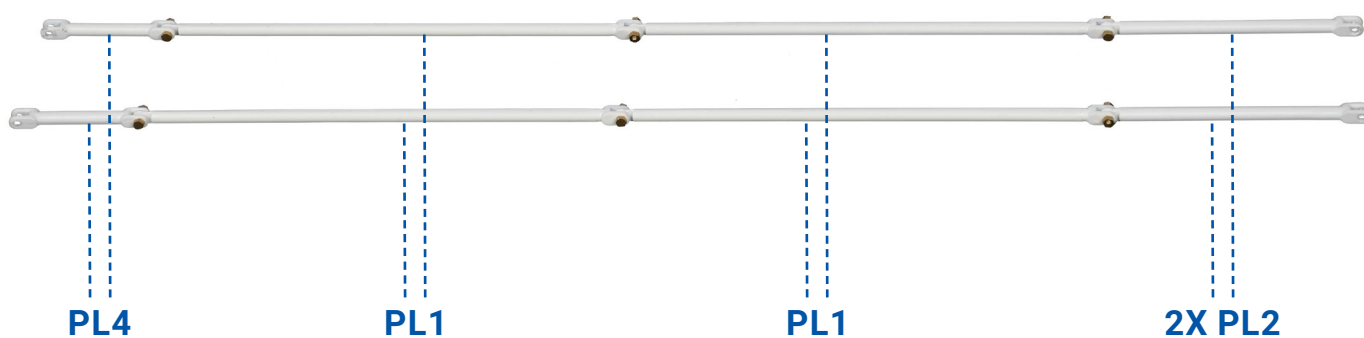
NOW YOU CAN START REEVING THE A FRAME AS SHOWN IN THE DIAGRAM.

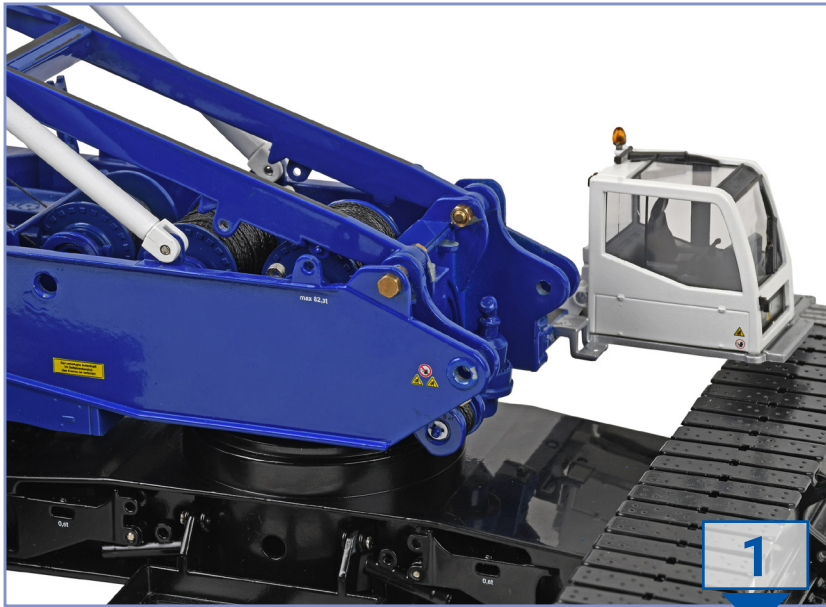


# ASSEMBLY

## Backmast

PRE-ASSEMBLE THE BACKMAST  
AND BACKMAST PENDANT LINES.

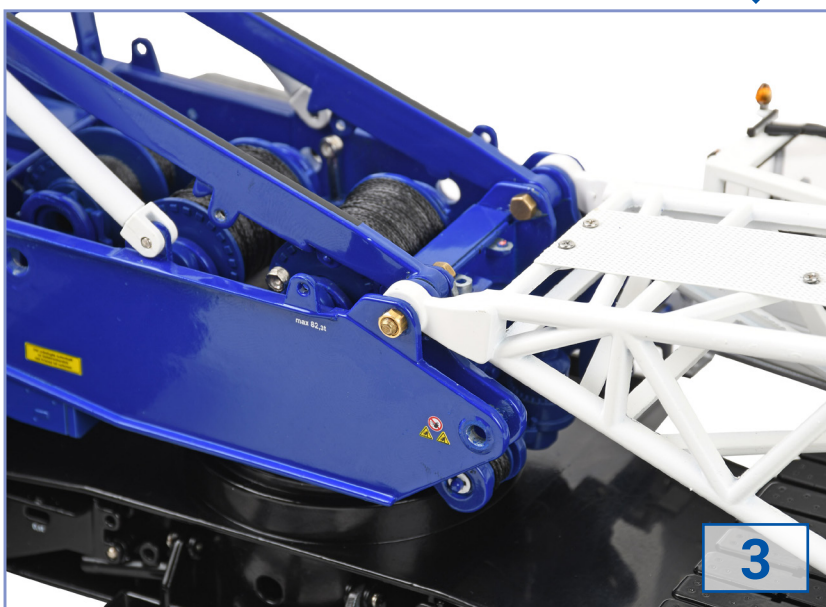




REMOVE THE BOLTS, POSITION THE BACKMAST BETWEEN THE BRACKETS AND SCREW THE BOLTS BACK IN PLACE.

**NOTE**

KEEP TENSION ON THE ROPE OF THE A-FRAME TO PREVENT IT FROM JUMPING OFF.



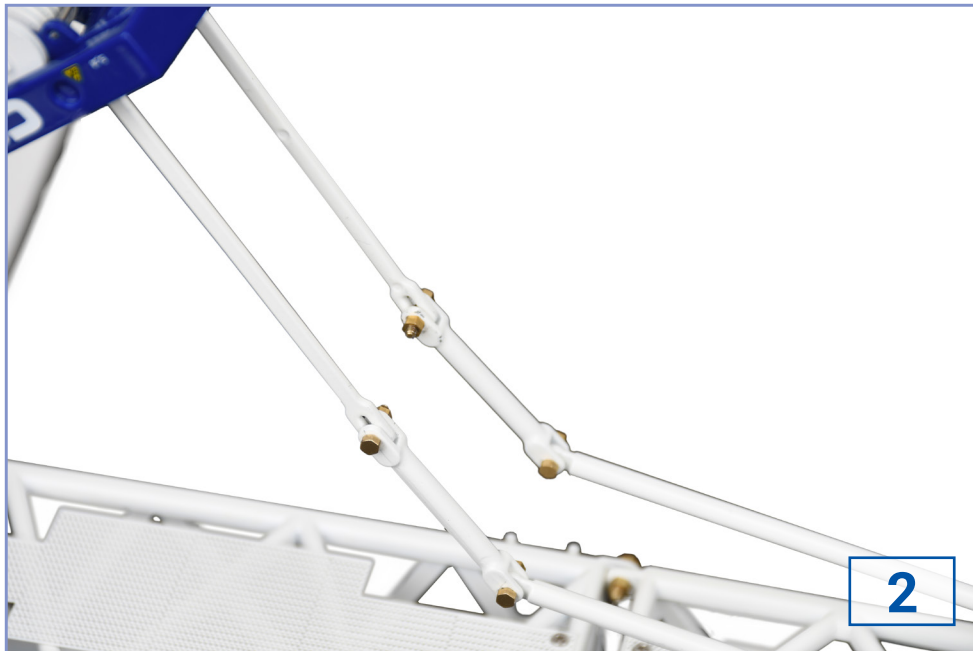
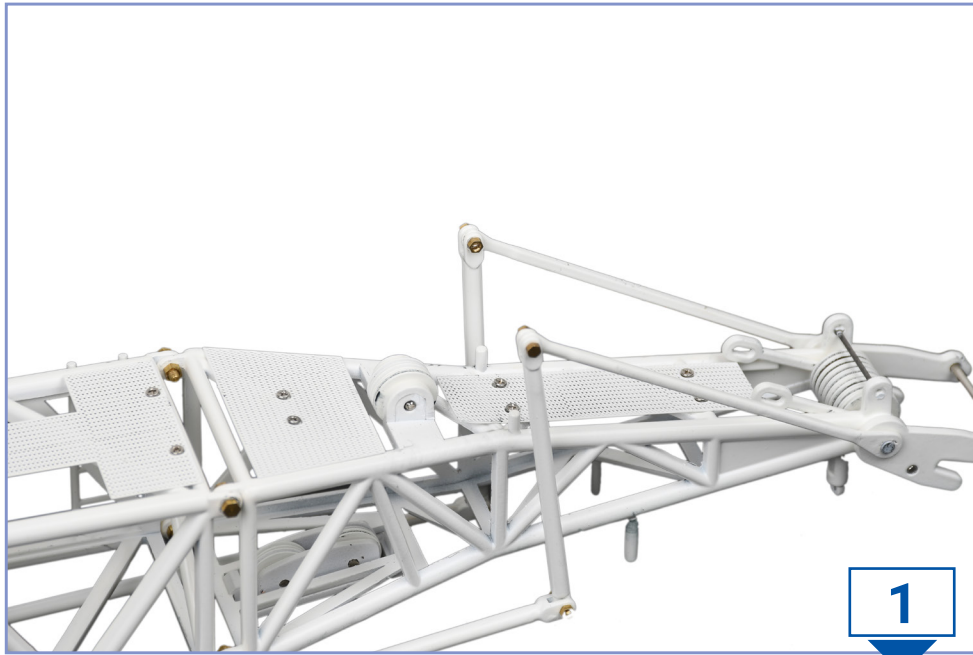


B1

SECURE THE PENDANT LINES TO THE BACKMAST TOP SECTION AND THE A-FRAME.



N1





# ASSEMBLY

## Main boom and Luffing Jib

PRE-ASSEMBLE THE MAIN BOOM AND FOOT SECTION ONTO THE LOWER STRUT PENDANT LINES, AND THE HEAVY DUTY HEAD ONTO THE BRIDLE PENDANT LINES.



B4



N2

6-C

1-C



STRUT  
TRAPEZIUM

PL2

PL1

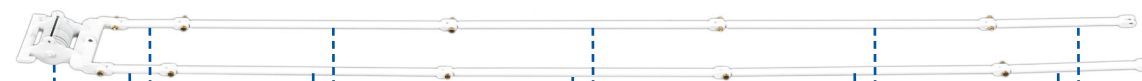
PL1



B1



N1



BRIDLE

PL4

PL1

PL1

PL1

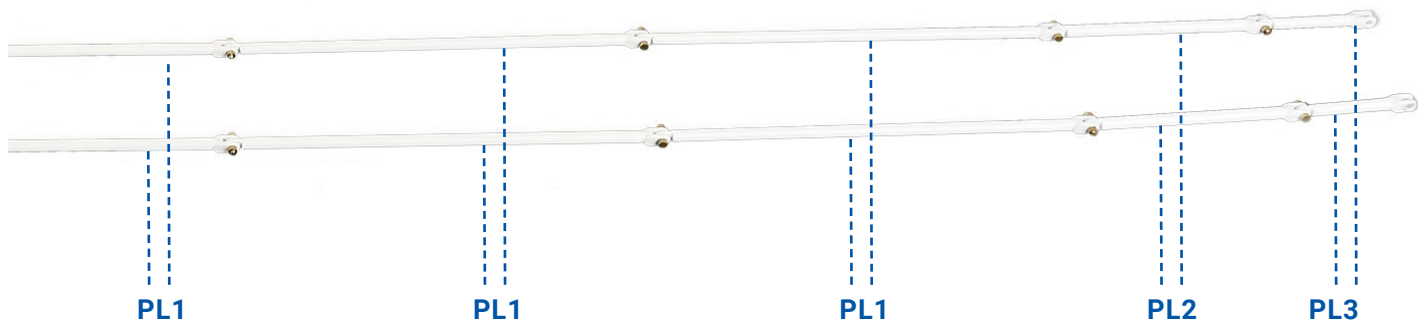
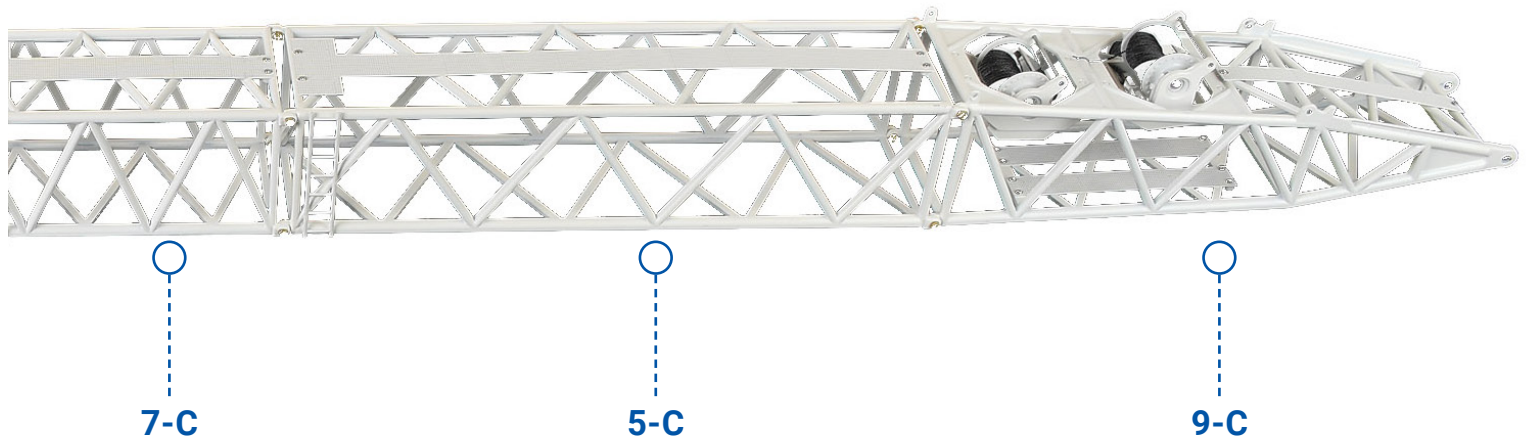
PL2



B1



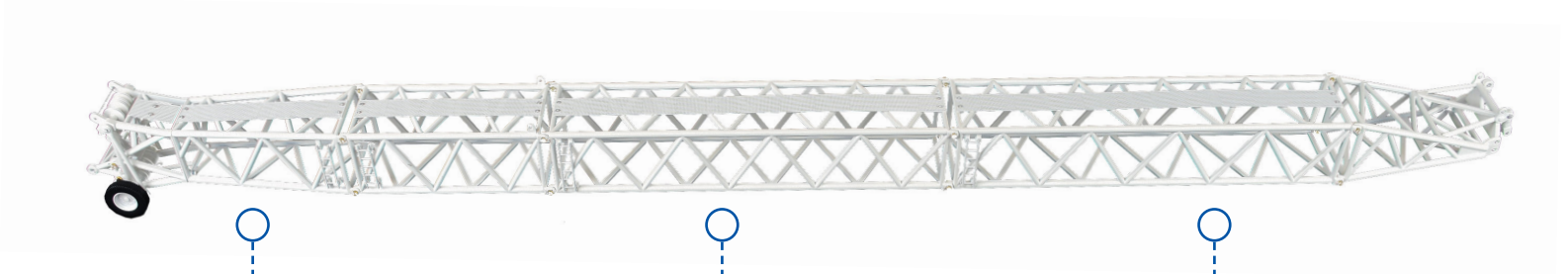
N1



ASSEMBLE THE MAIN BOOM  
IN PLACE ON  
THE UPPER STRUCTURE.



PRE-ASSEMBLE LUFFING JIB AND LUFFING JIB PENDANT LINES.



10-B

7-B

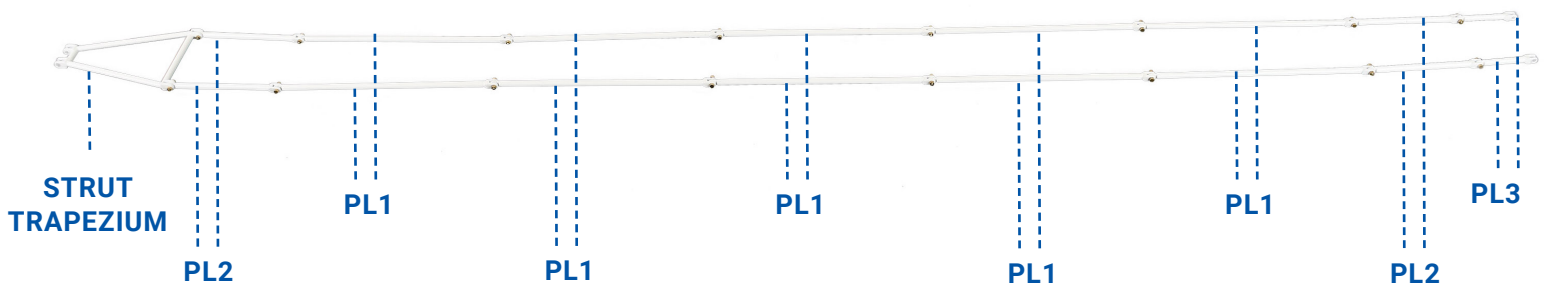
11-B



B3



N2



STRUT  
TRAPEZIUM

PL2

PL1

PL1

PL1

PL1

PL1

PL2

PL3

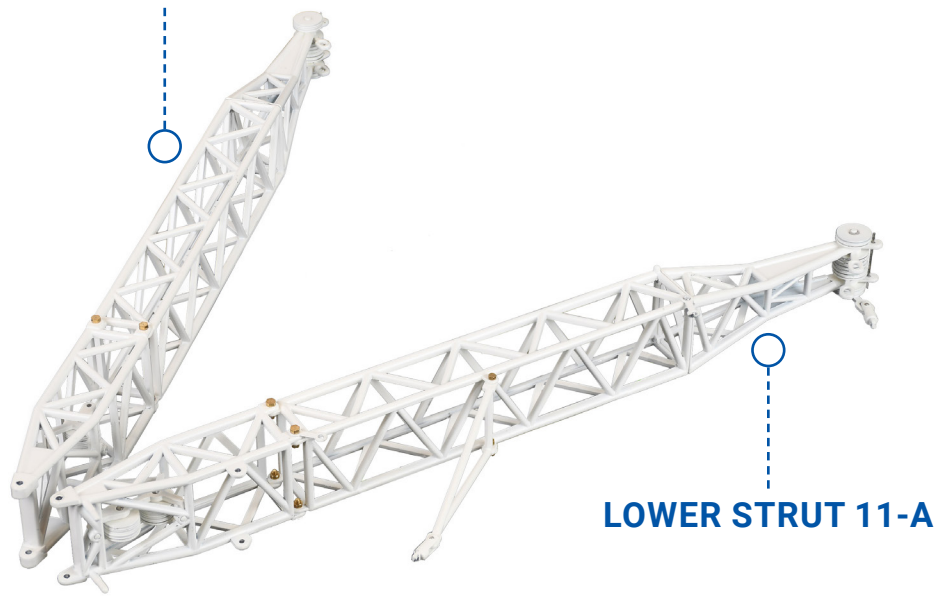


B1



N1

**UPPER STRUT 10-A**



**LOWER STRUT 11-A**



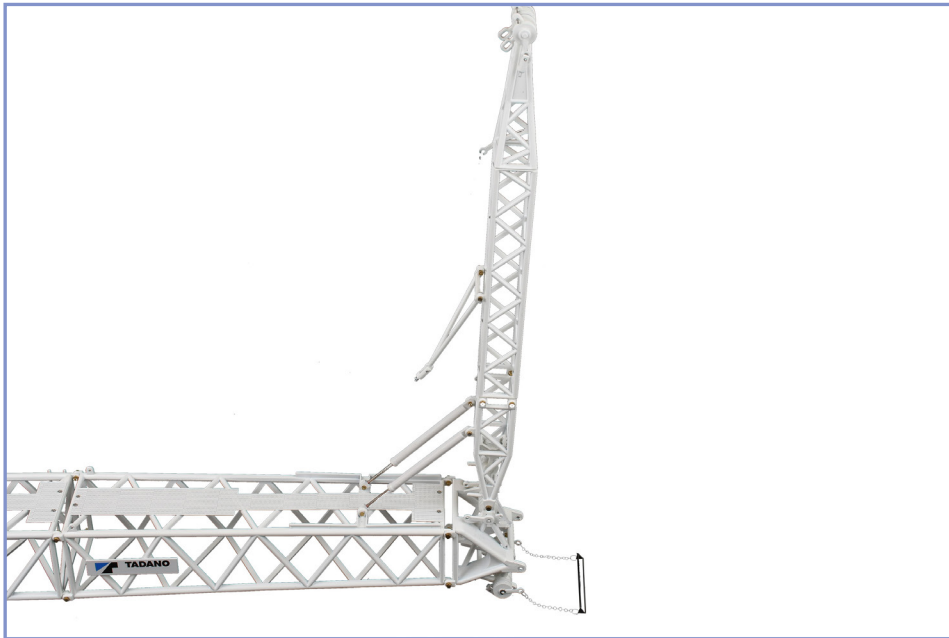
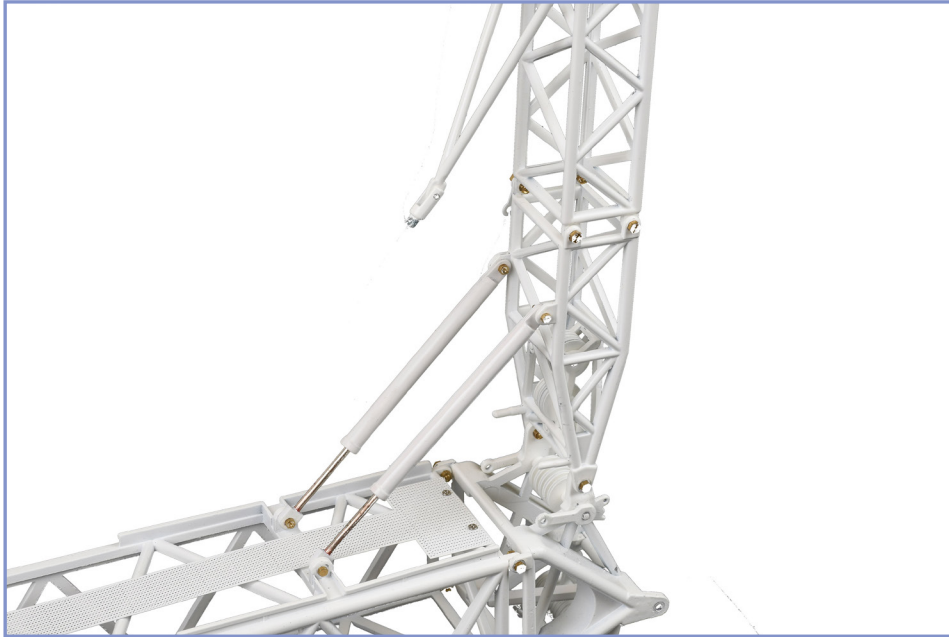
**1**



**2**

ASSEMBLE THE LOWER STRUT  
ONTO THE HEAVY DUTY HEAD.



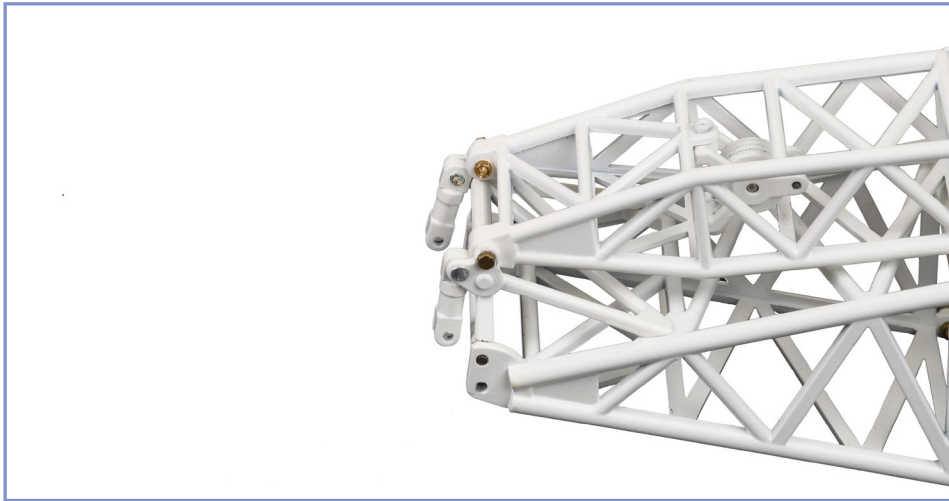


**B1**



**N1**

SET THE LOWER STRUT IN A 90 DEGREE ANGLE ON THE MAIN BOOM AND FIX THE BOOM STOPS IN PLACE.



**B5**



**N2**

ASSEMBLE THE UPPER STRUT ONTO  
THE LUFFING JIB FOOT SECTION.

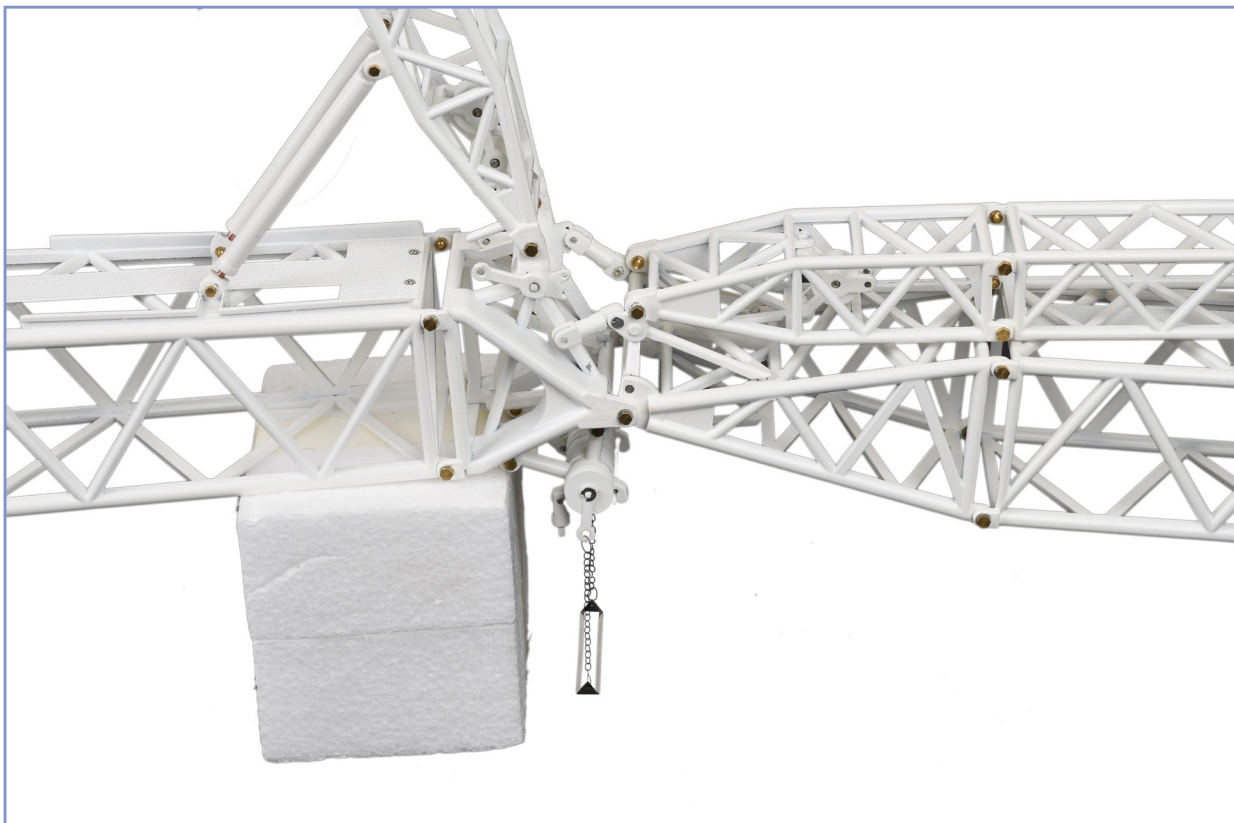


**B4**

PLACE A FOAM BLOCK UNDERNEATH THE BOOM HEAD OF THE MAIN BOOM AND ASSEMBLE THE LUFFING JIB TO THE MAIN BOOM.

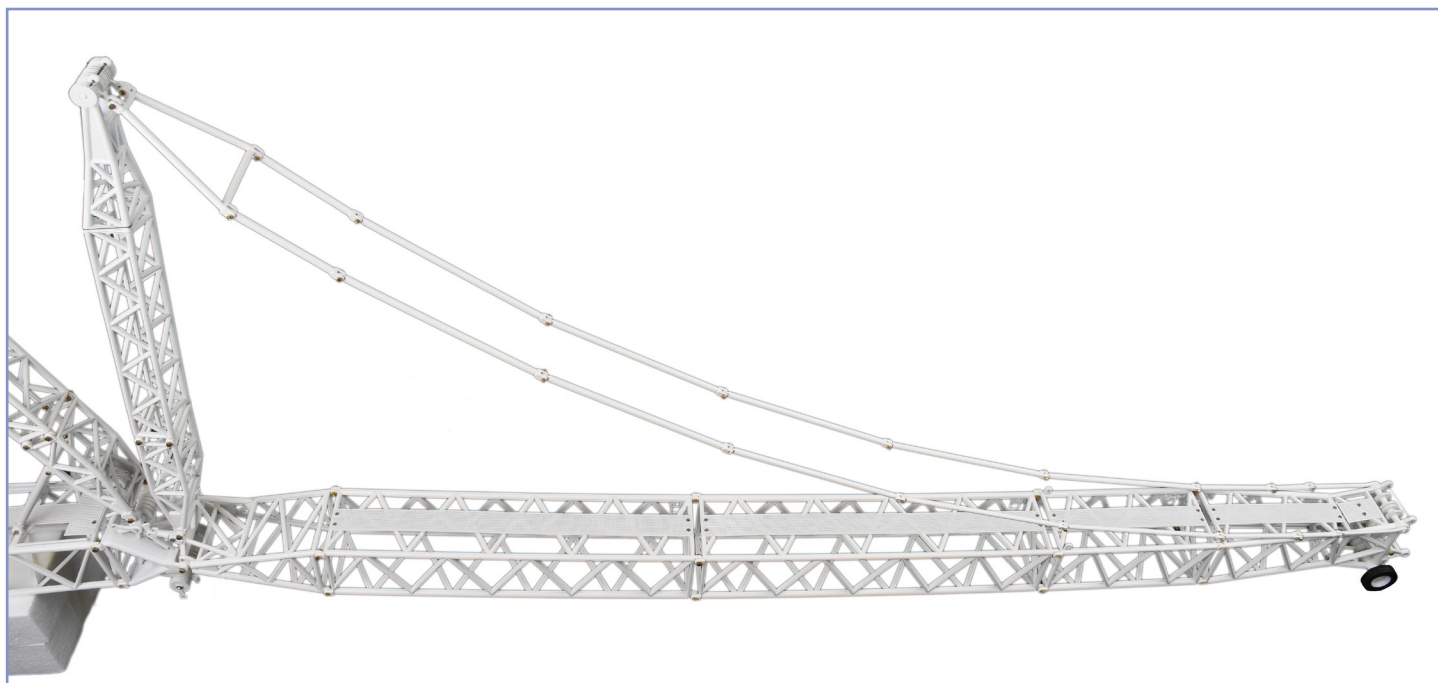
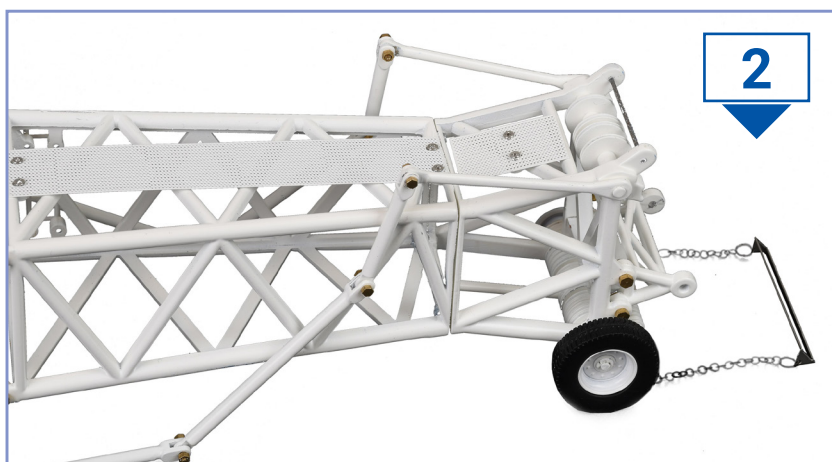


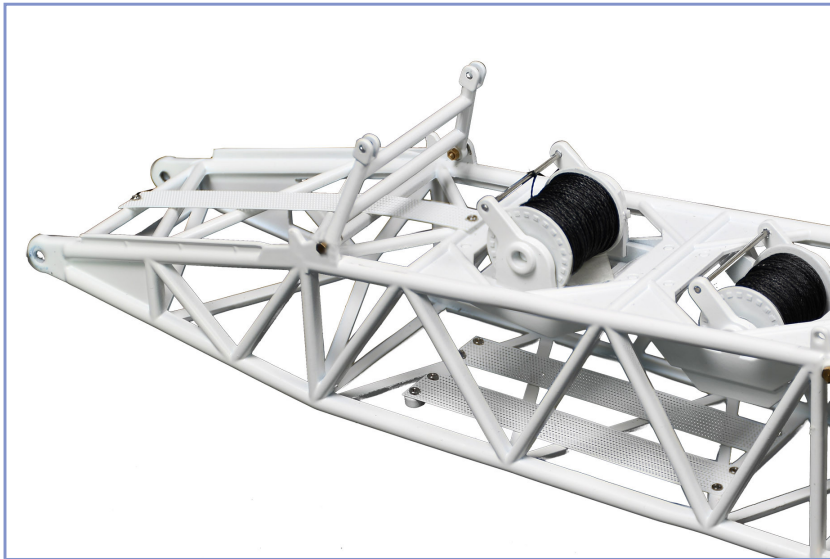
**N2**





SECURE THE LUFFING JIB PENDANT LINES BETWEEN THE UPPER STRUT AND LUFFING JIB TOP SECTION.

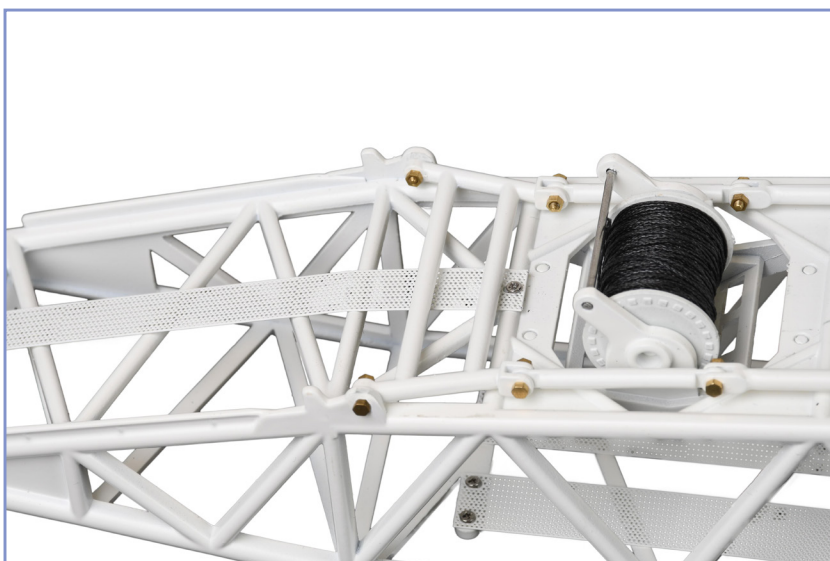




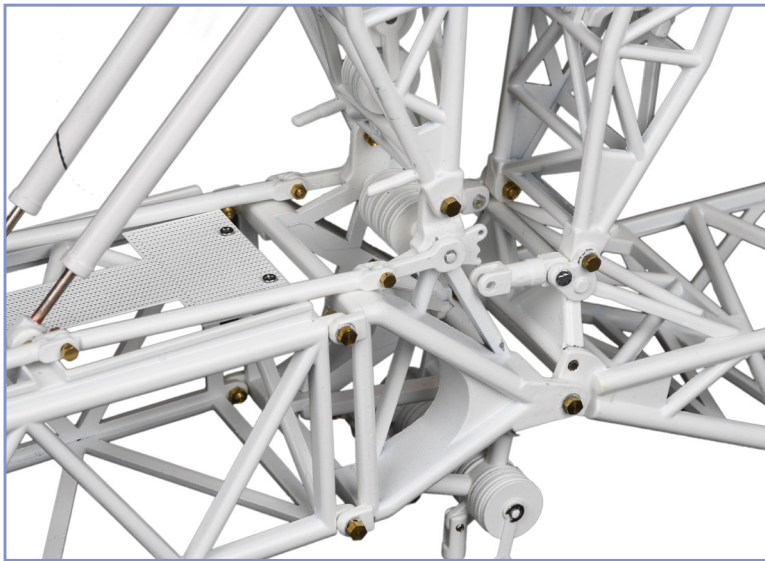
FIX THE MAIN BOOM FOOT SECTION  
TRAPEZIUM IN PLACE.



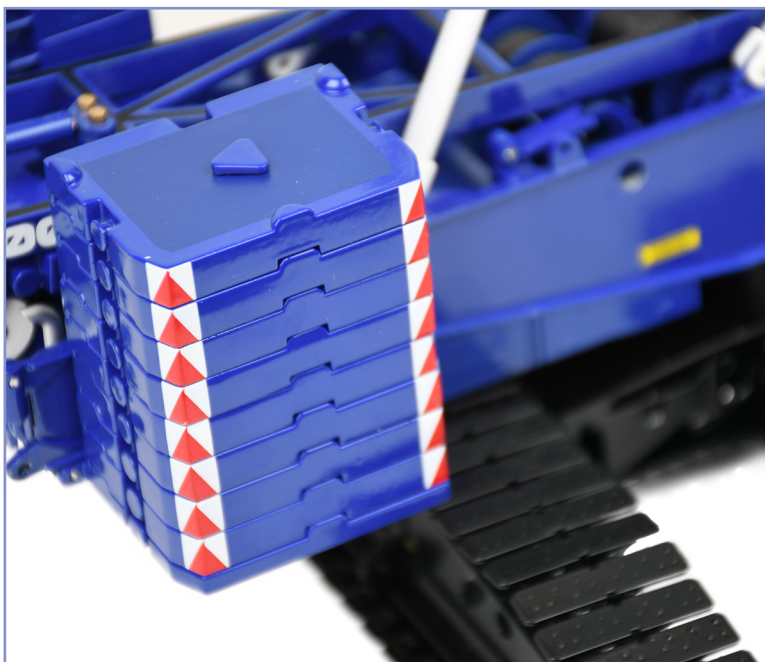
SECURE THE FOOT SECTION  
TO LOWER STRUT PENDANT LINE  
BETWEEN THE FOOT SECTION  
TRAPEZIUM AND LOWER STRUT.



HEAVY DUTY HEAD TO BRIDLE PENDANT LINES (PRE-ASSEMBLED).



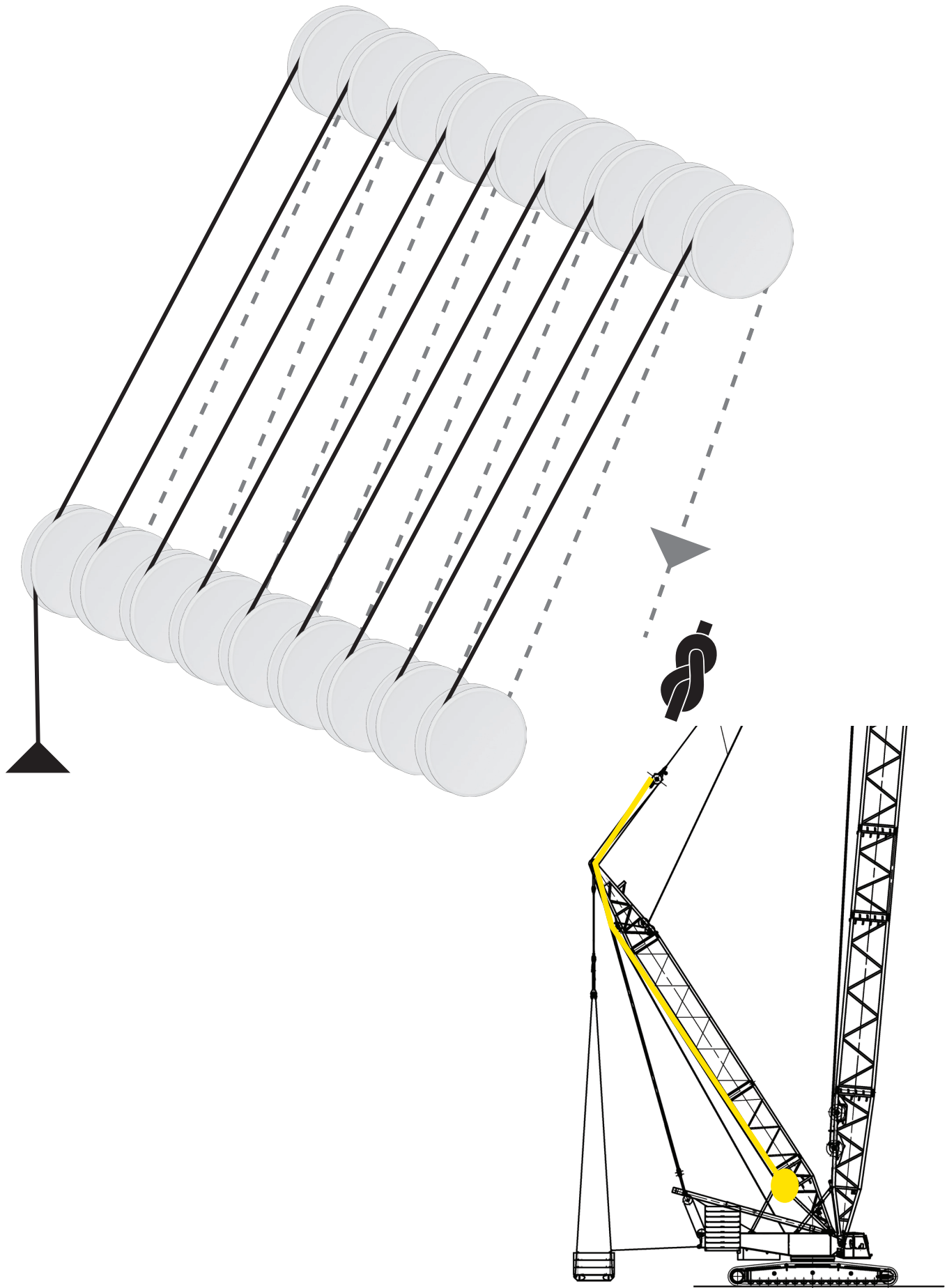
SECURE THE PENDANTS TO THE HEAVY DUTY HEAD.



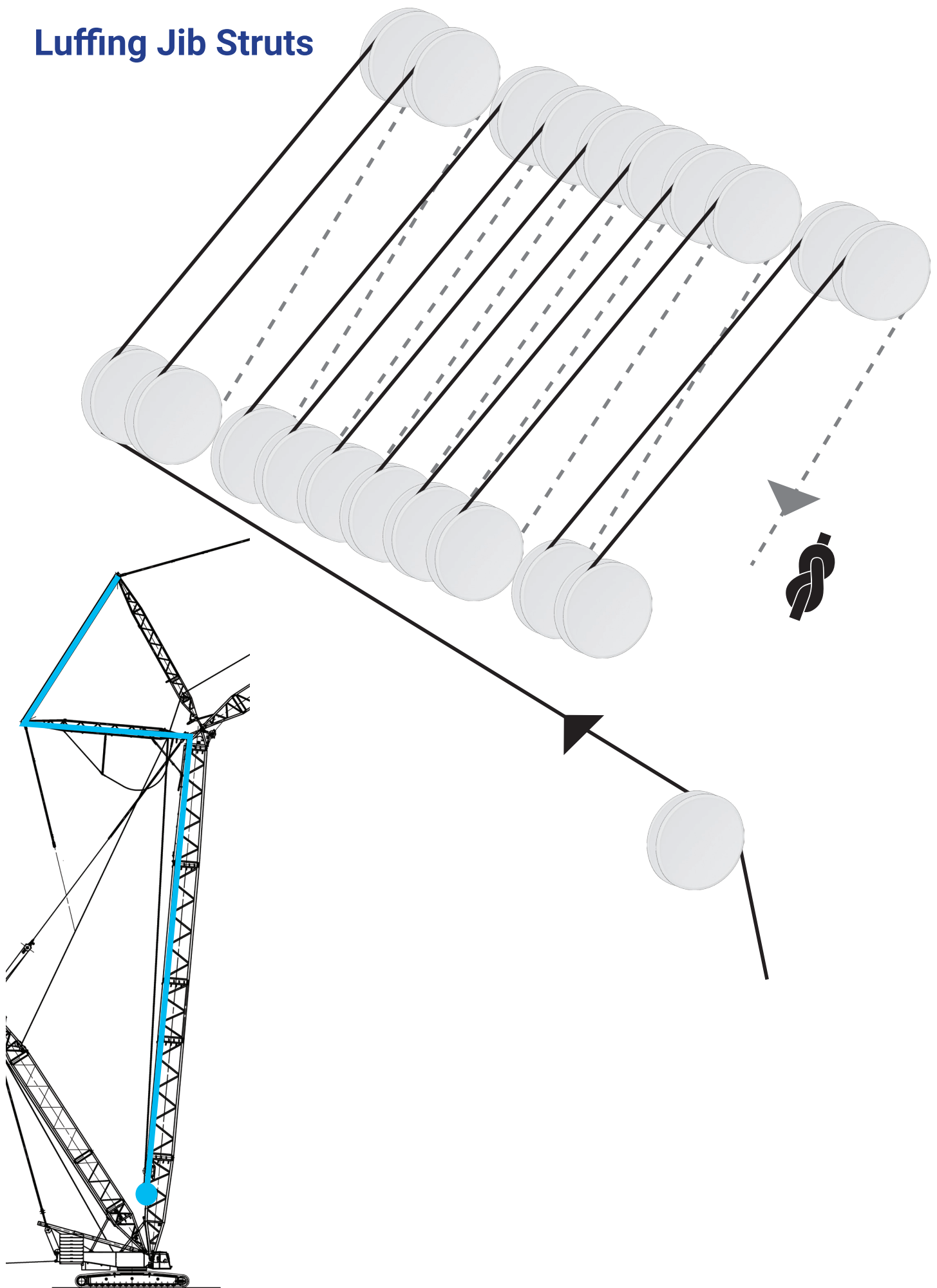
PLACE 8x 10T COUNTERWEIGHT BLOCKS ON EITHER SIDE OF THE GROUND PLATE AND SECURE IT IN PLACE WITH THE COUNTERWEIGHT PIN.

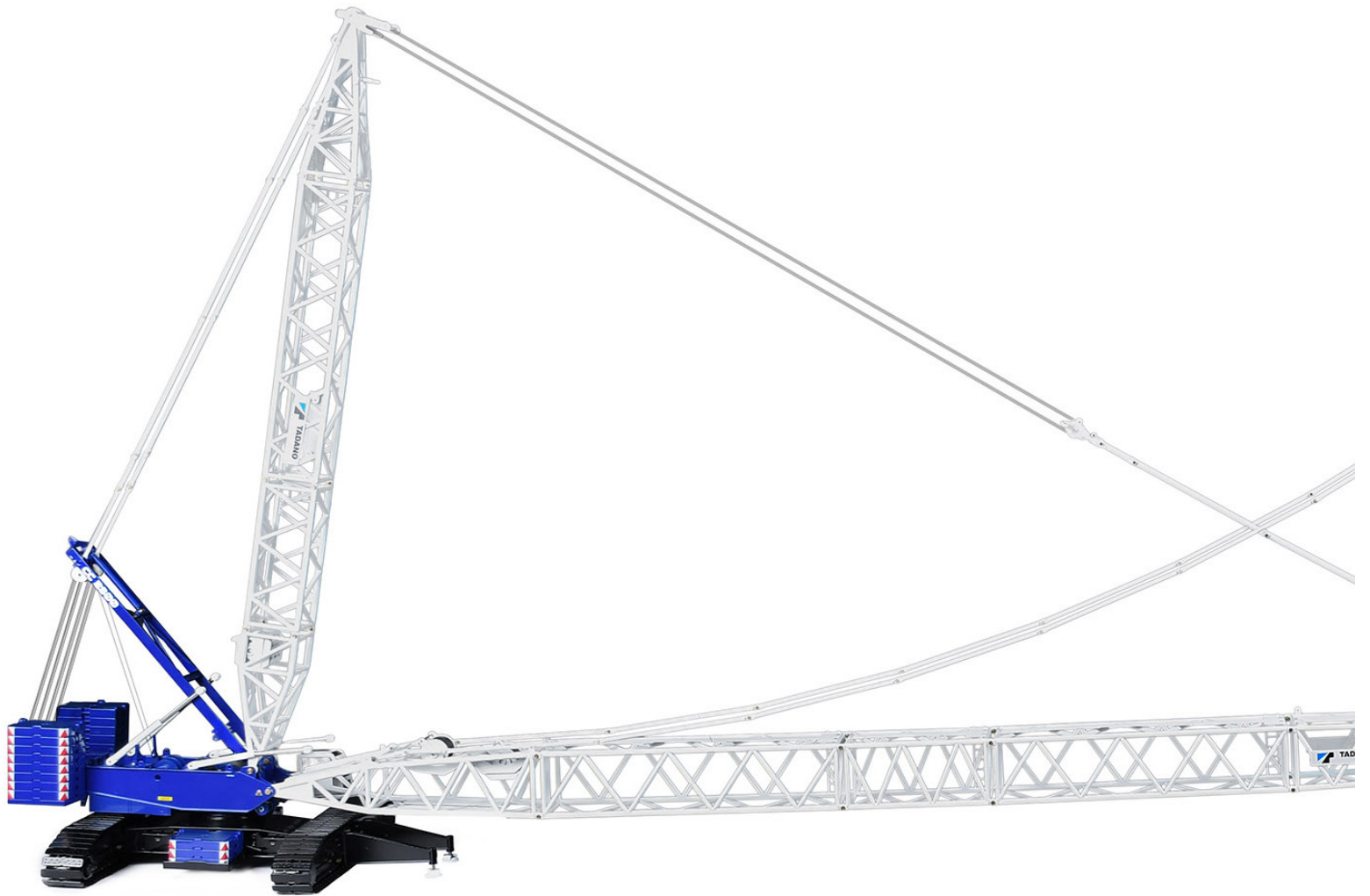
# REEVING DIAGRAMS

## Main boom Bridle



# Luffing Jib Struts



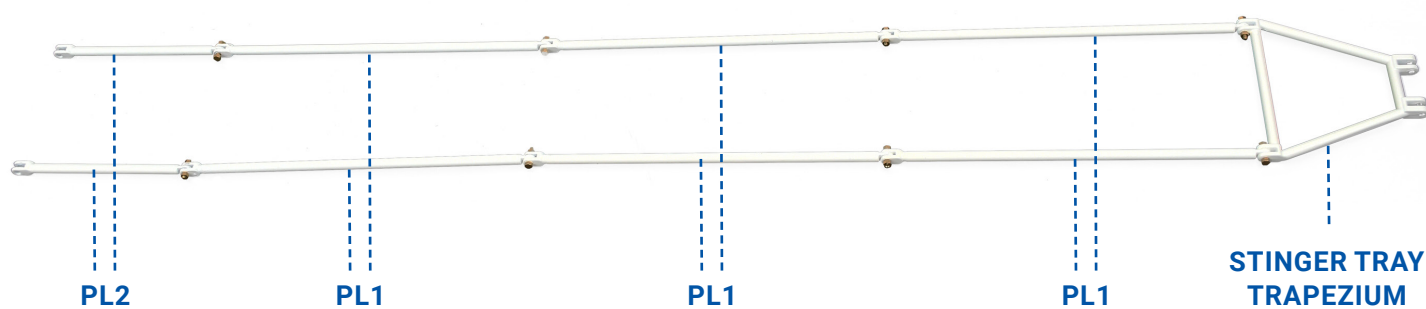
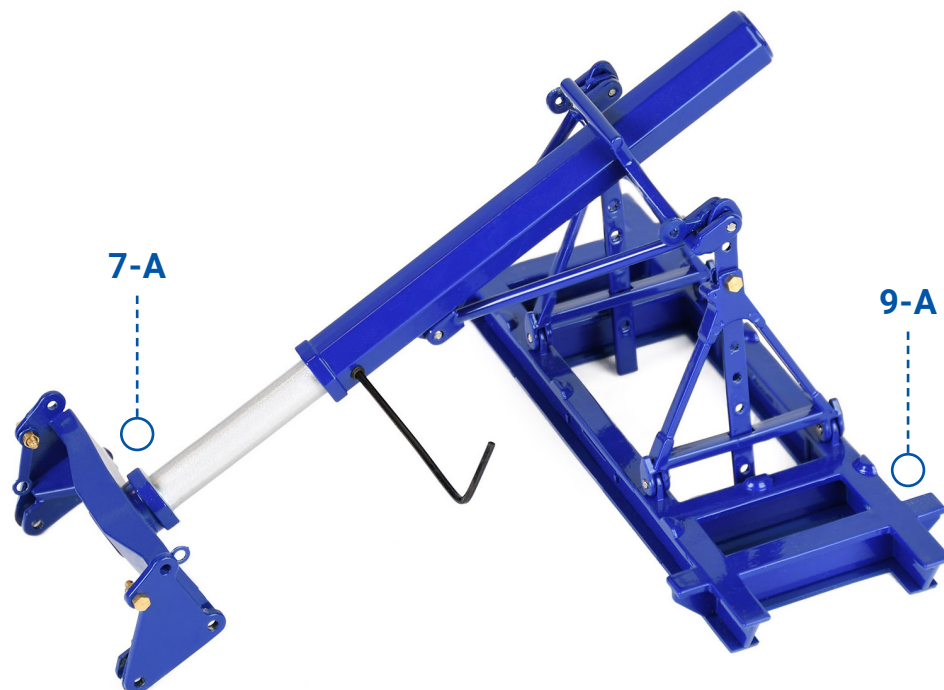


# OVERVIEW

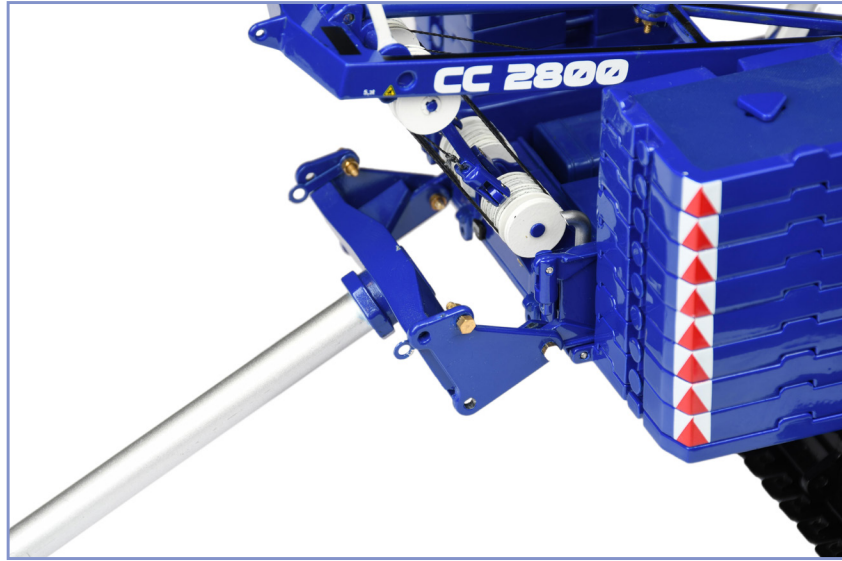


# ASSEMBLY

## Stinger tray



ASSEMBLE STINGER TO THE UPPER STRUCTURE.



SECURE THE PENDANTS TO THE BACKMAST.





ATTACH THE SL TRAY TO THE  
PENDANT LINES.

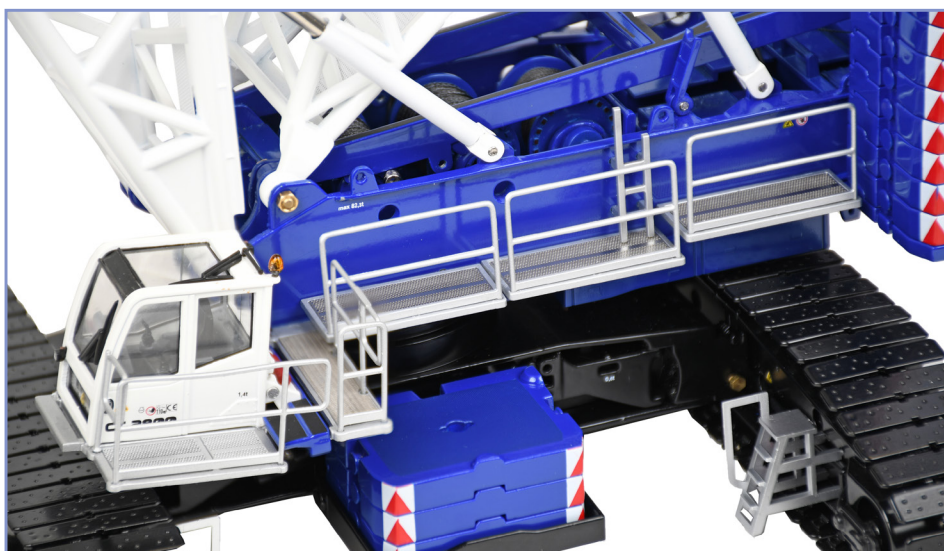
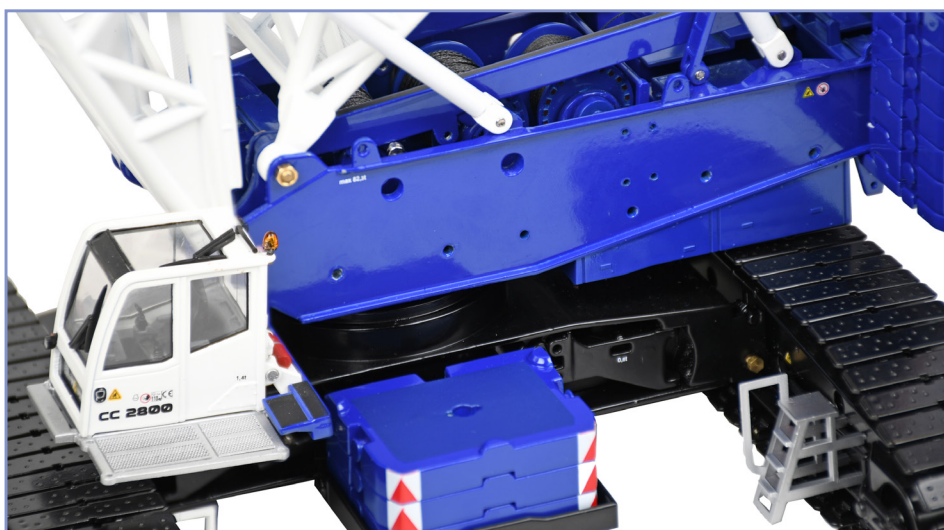


LAY THE COUNTERWEIGHT BLOCKS  
IN PLACE ON THE SL TRAY.

# ACCESSORIES

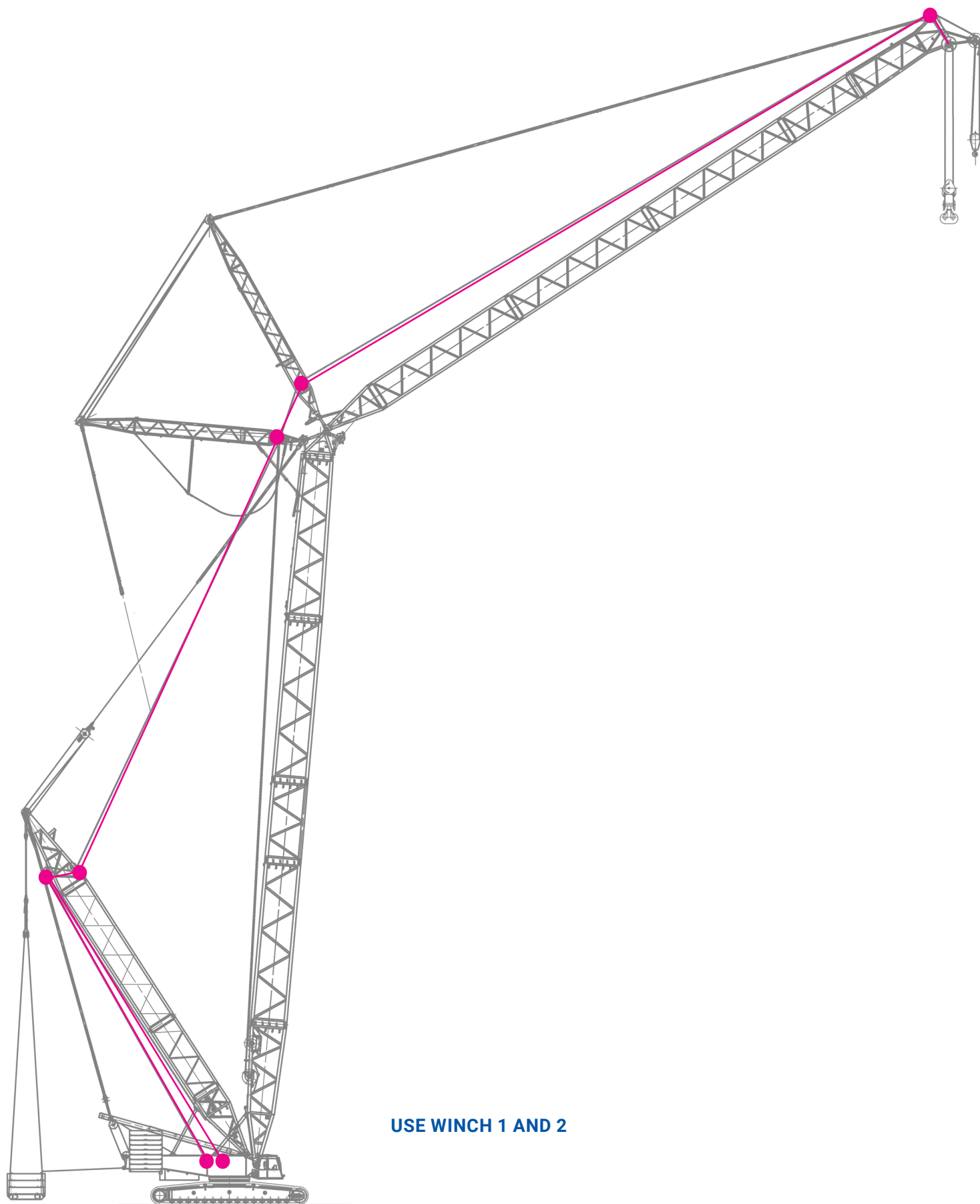


FRICITION-FIT THE STAIRS  
TO THE CRAWLERS.

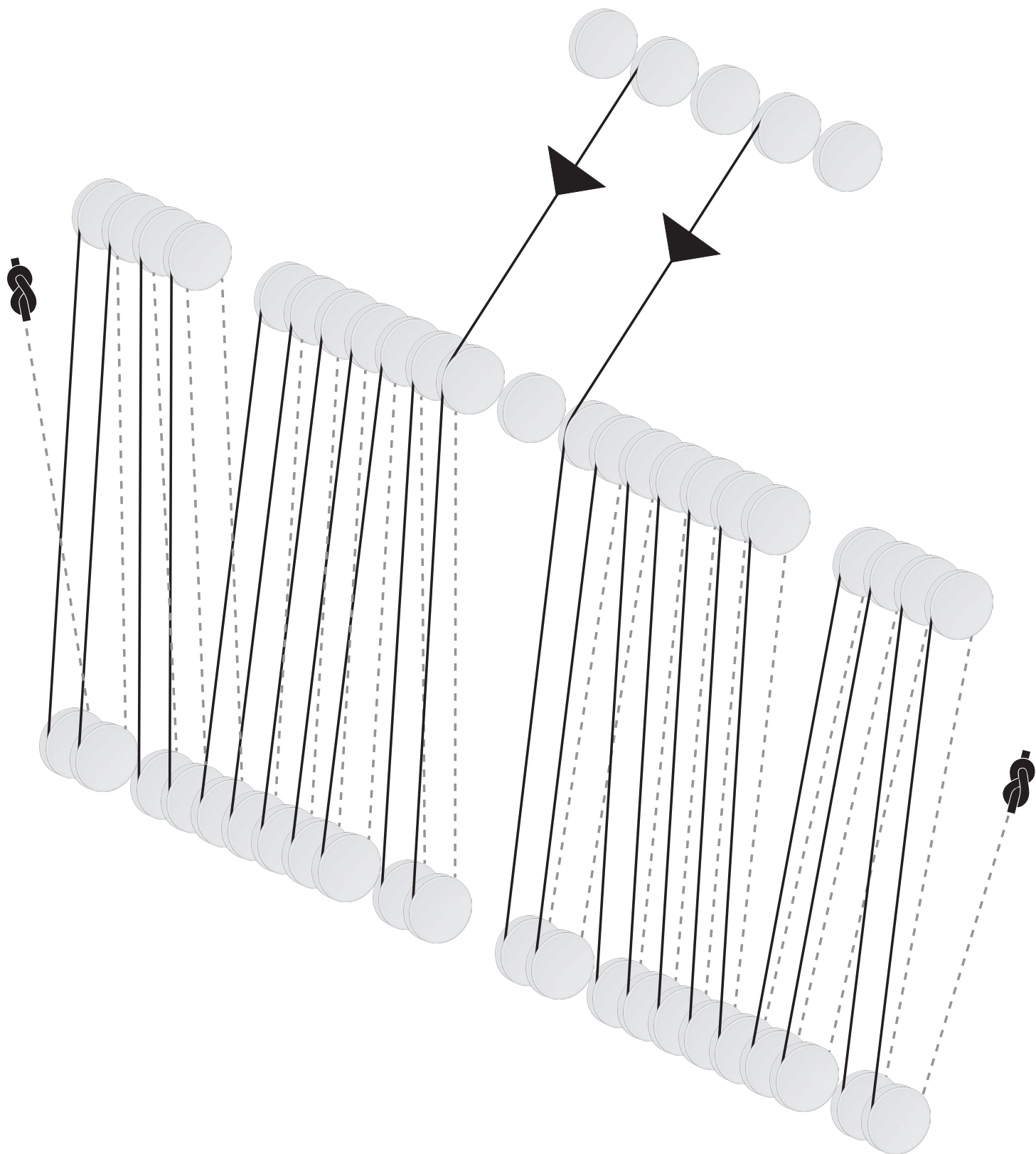


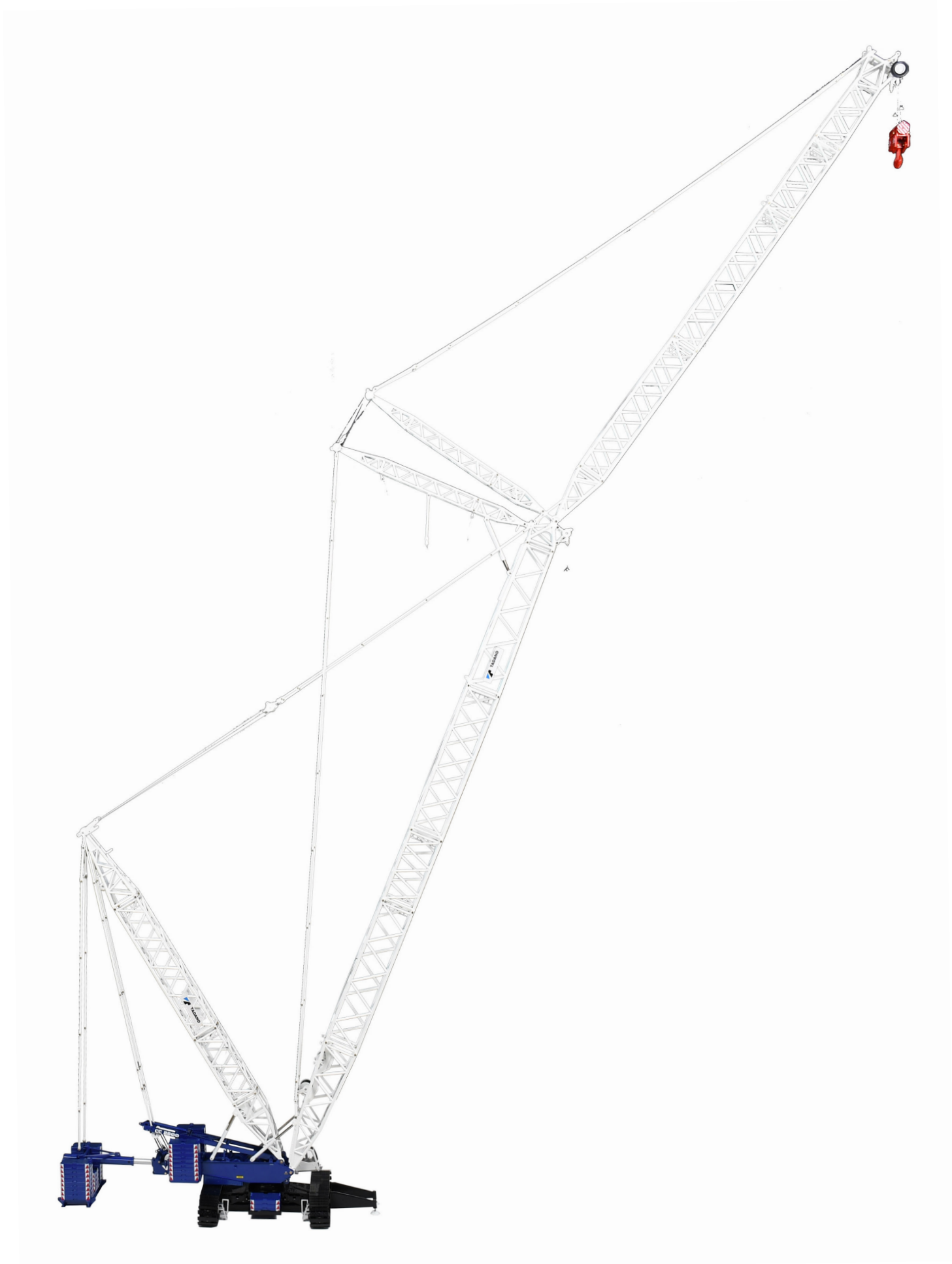
# REEVING DIAGRAM

## 600t Hook block



USE WINCH 1 AND 2





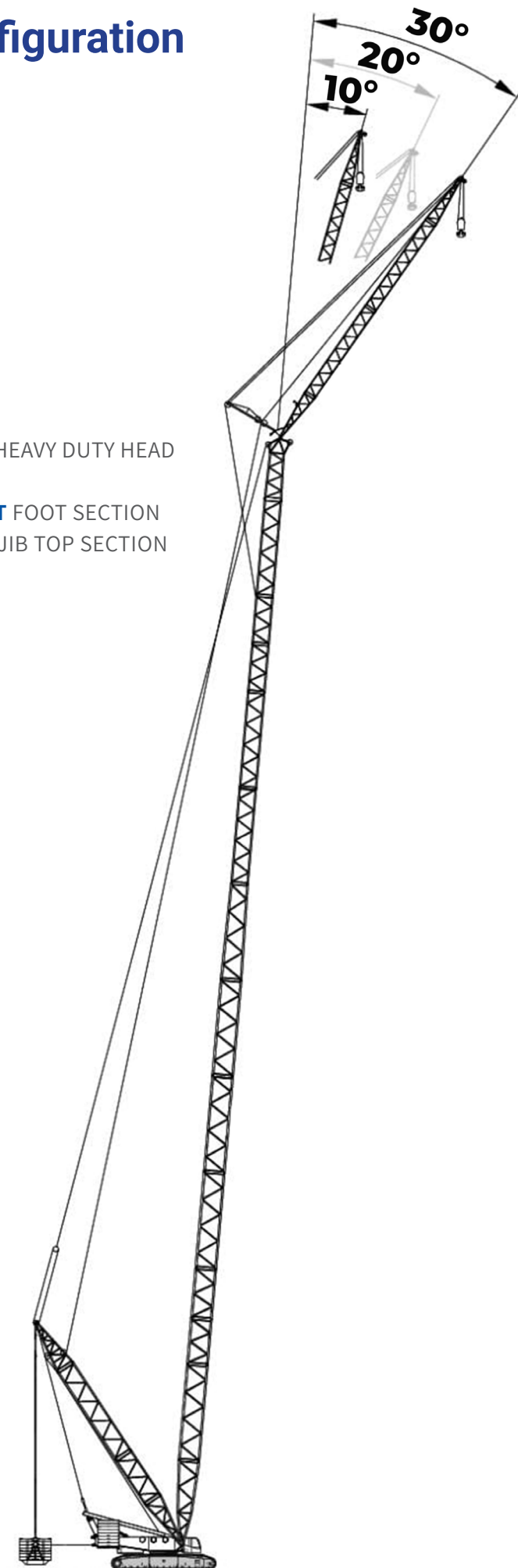
**READY TO**

**START LIFTING!**

**The crane is now build in  
a Luffing Jib Configuration.**

### ASSEMBLE THE MAIN BOOM WITH:

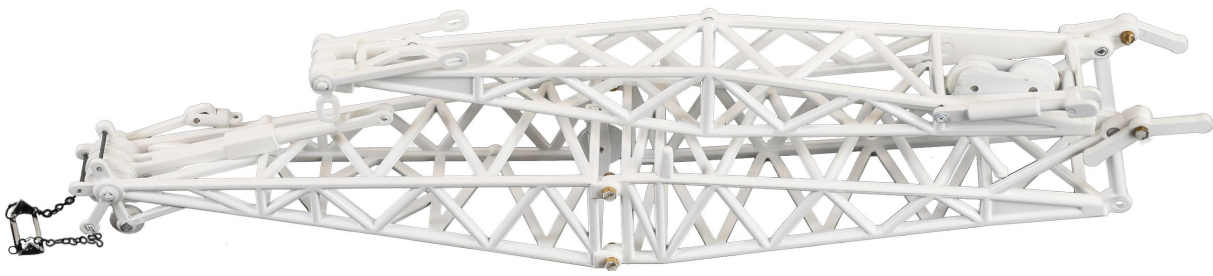
- 9-C** MAIN BOOM FOOT SECTION
- 1-C** 12M MAIN BOOM SECTION
- 7-C** 6M MAIN BOOM SECTION
- 5-C** 12M MAIN BOOM SECTION
- 6-C** REDUCER SECTION **WITHOUT** 600T HEAVY DUTY HEAD
- 7-B** 12M LUFFING JIB SECTION
- 11-B** 12M LUFFING JIB SECTION **WITHOUT** FOOT SECTION
- 10-B** 6M LUFFING JIB SECTION AND 300T JIB TOP SECTION



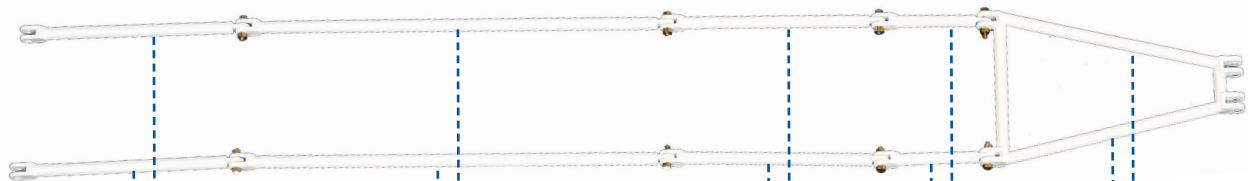


**150T HOOK BLOCK**

**LF2 JIB ( 12-A )**



**LOWER LF JIB PENDANT LINES**



PL2

PL1

PL2

PL3

LF JIB  
TRAPEZIUM



B1



N1

**UPPER LF JIB PENDANT LINE**



PL2

PL1

PL3



B1



N1



**B1**

FOR THE LF CONFIGURATION, PRE-ASSEMBLE TWO SEPARATE PENDANT LINES. EACH OUTLINE CONTAINS:



**N1**

1x PL4, 1x PL2, 8x PL1, 1x PL2 & 1x PL3



**B1**

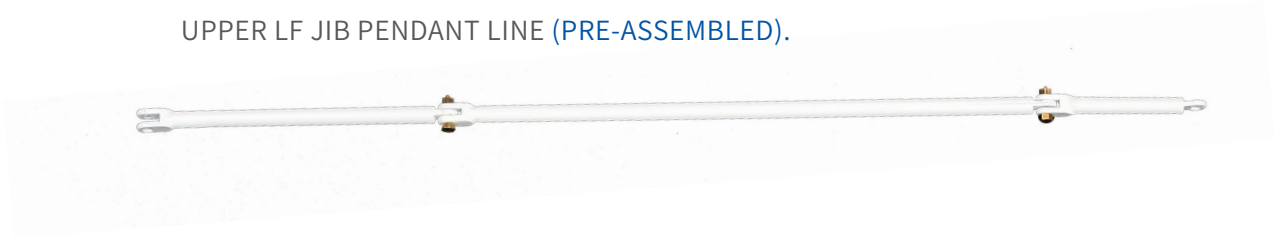
CONNECT THE PENDANT LINES TO THE BRIDLE AND THE 300T JIB TOP SECTION ( 10-B )



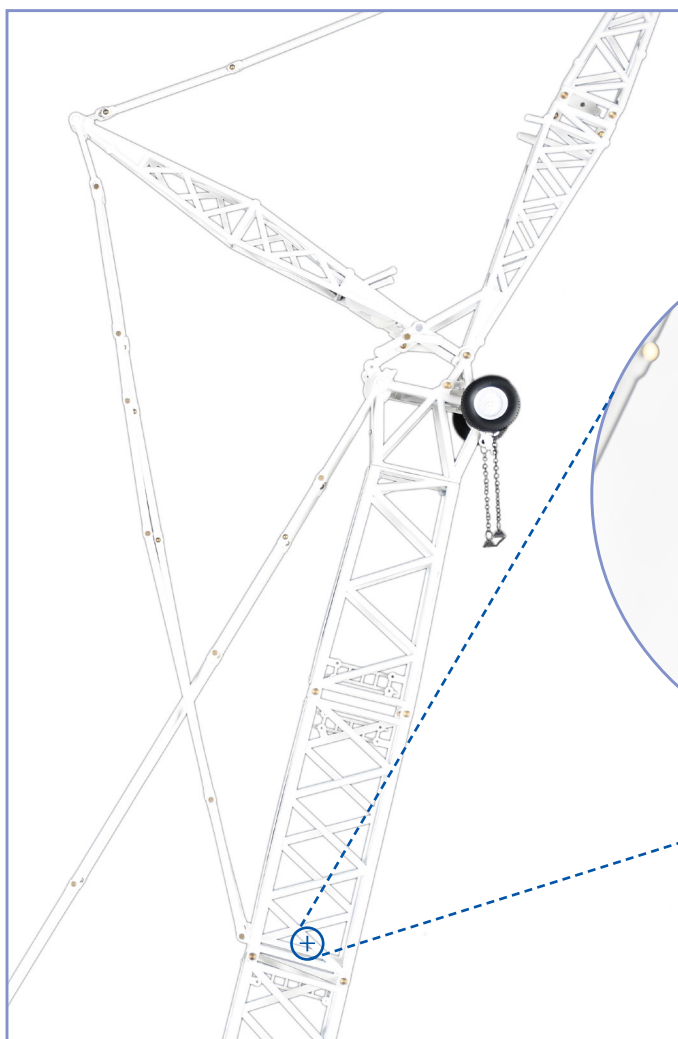
**N1**



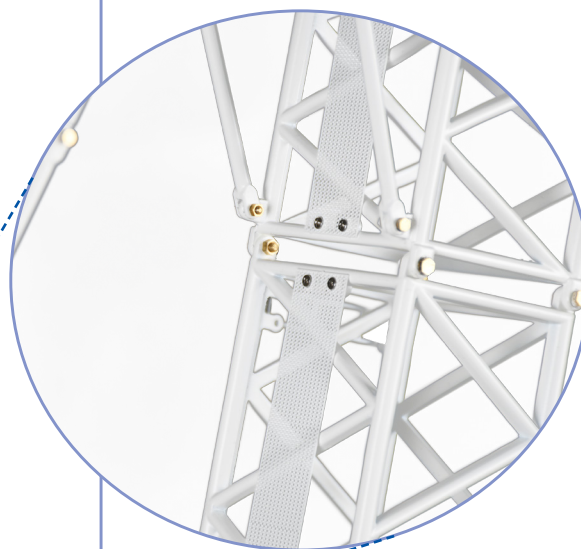
UPPER LF JIB PENDANT LINE (PRE-ASSEMBLED).

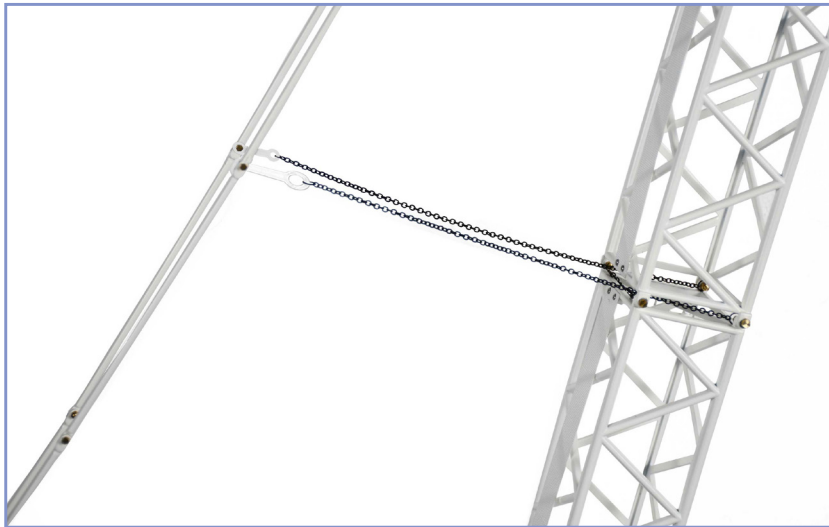


LOWER LF JIB PENDANT LINES (PRE-ASSEMBLED).



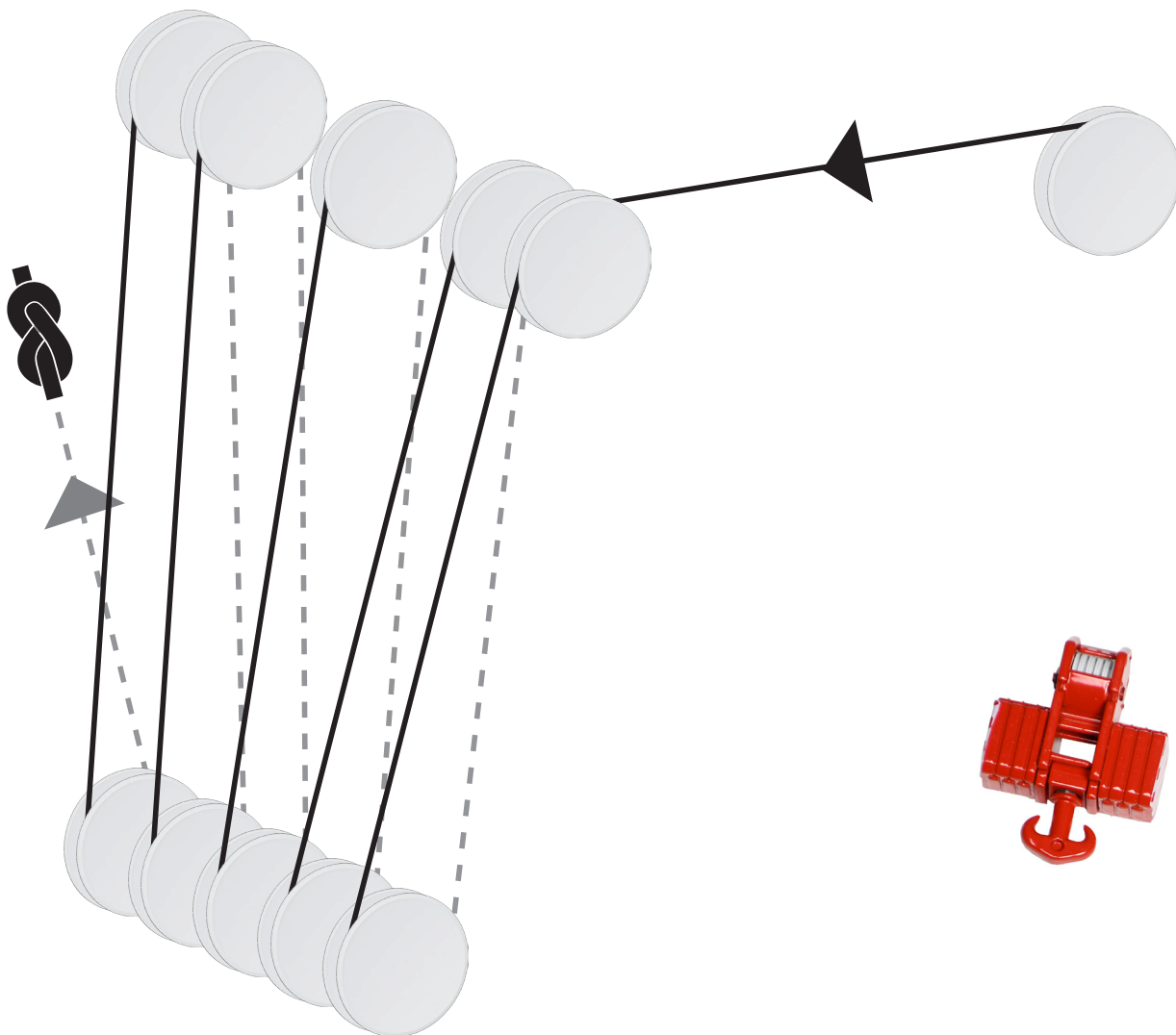
ASSEMBLE THE LOWER LF JIB PENDANT TO THE JIB AND MAIN BOOM.





ATTACH THE MID PENDANT TO THE PENDANT LINES AND THE LAST TWO 12M LUFFING JIB SECTION, USING THE 8-SHAPE CONNECTORS.

## Reeving diagram 150t Hook block





**READY TO**

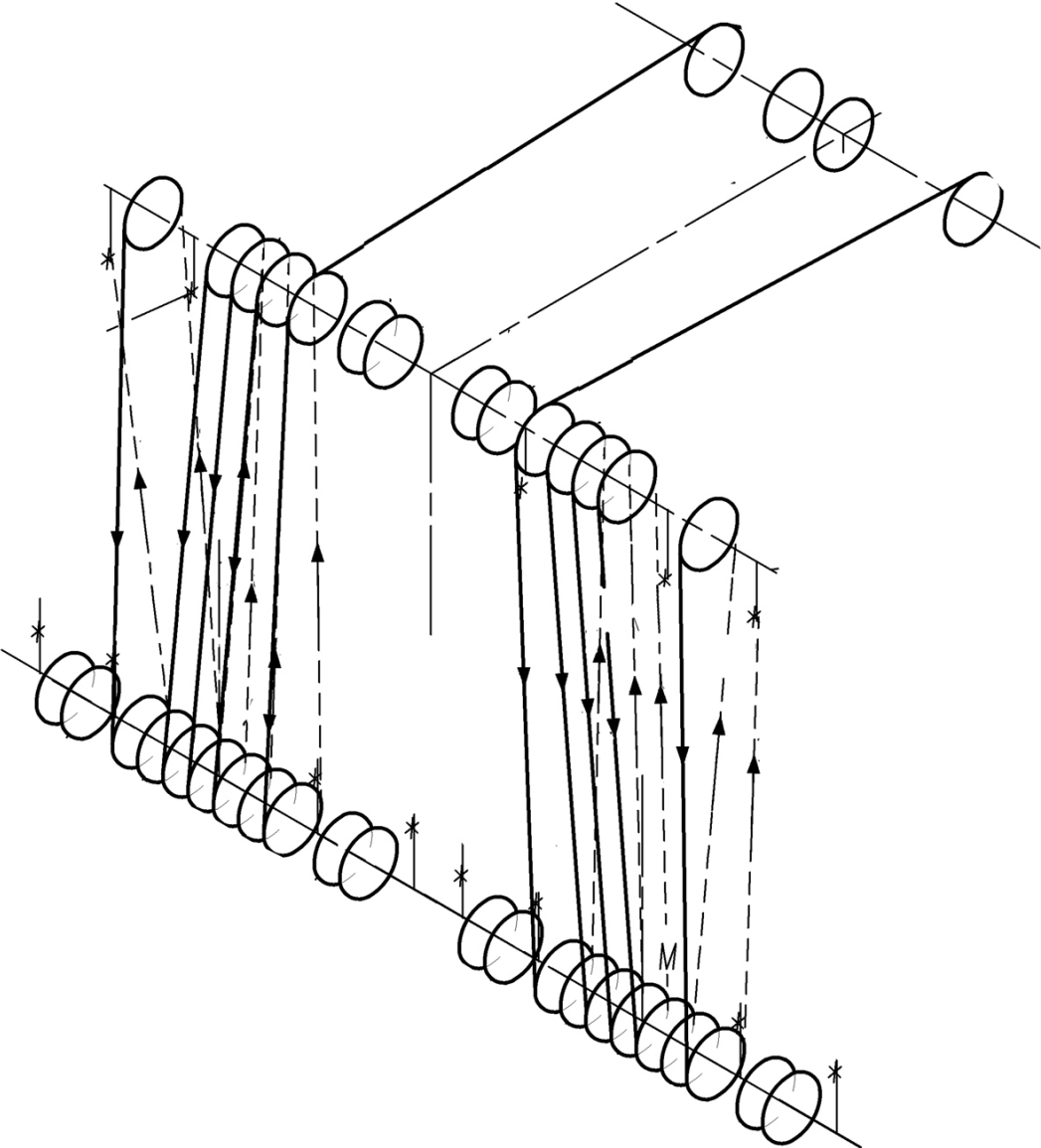
**START LIFTING!**

**The crane is now build in  
the LF configuration.**

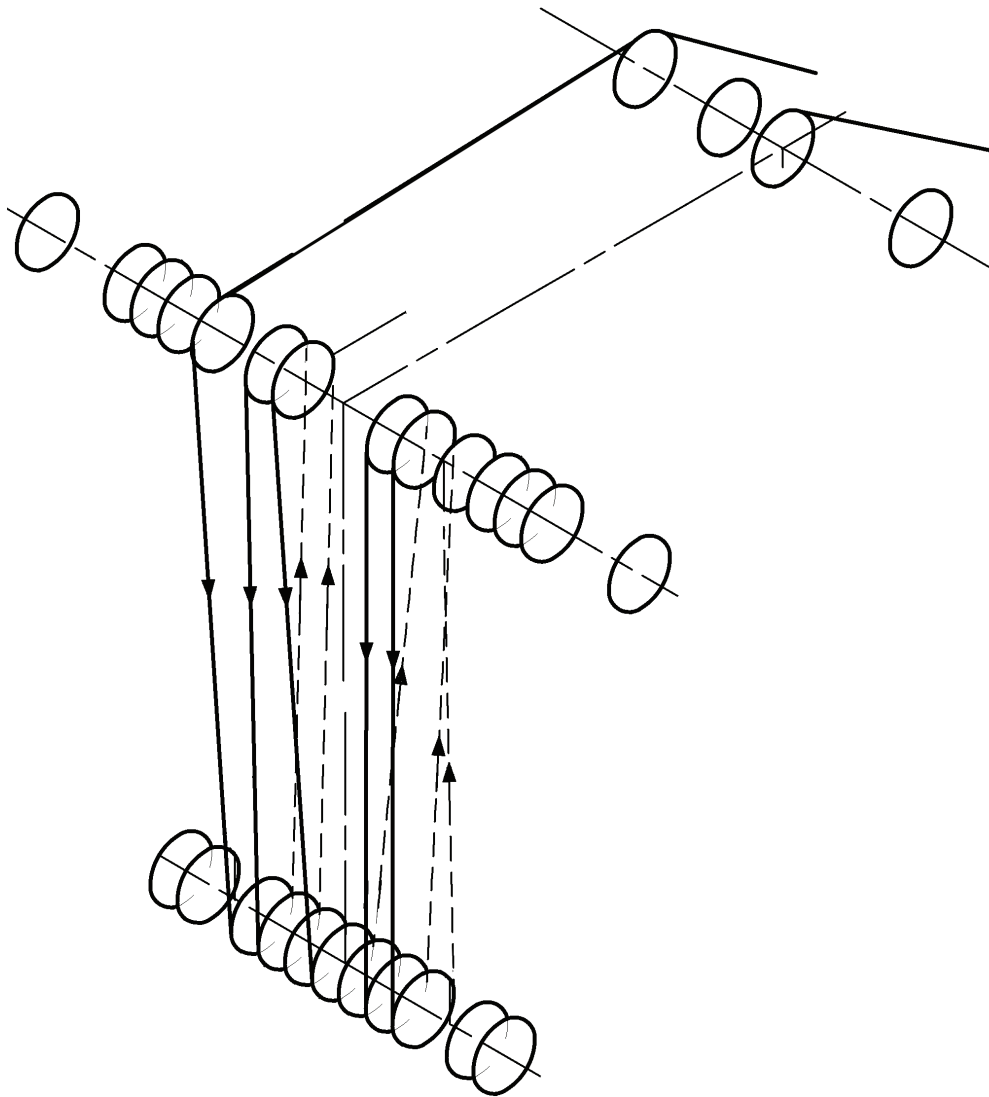
**EXTRA'S**



**ADDITIONAL REEVING DIAGRAM**

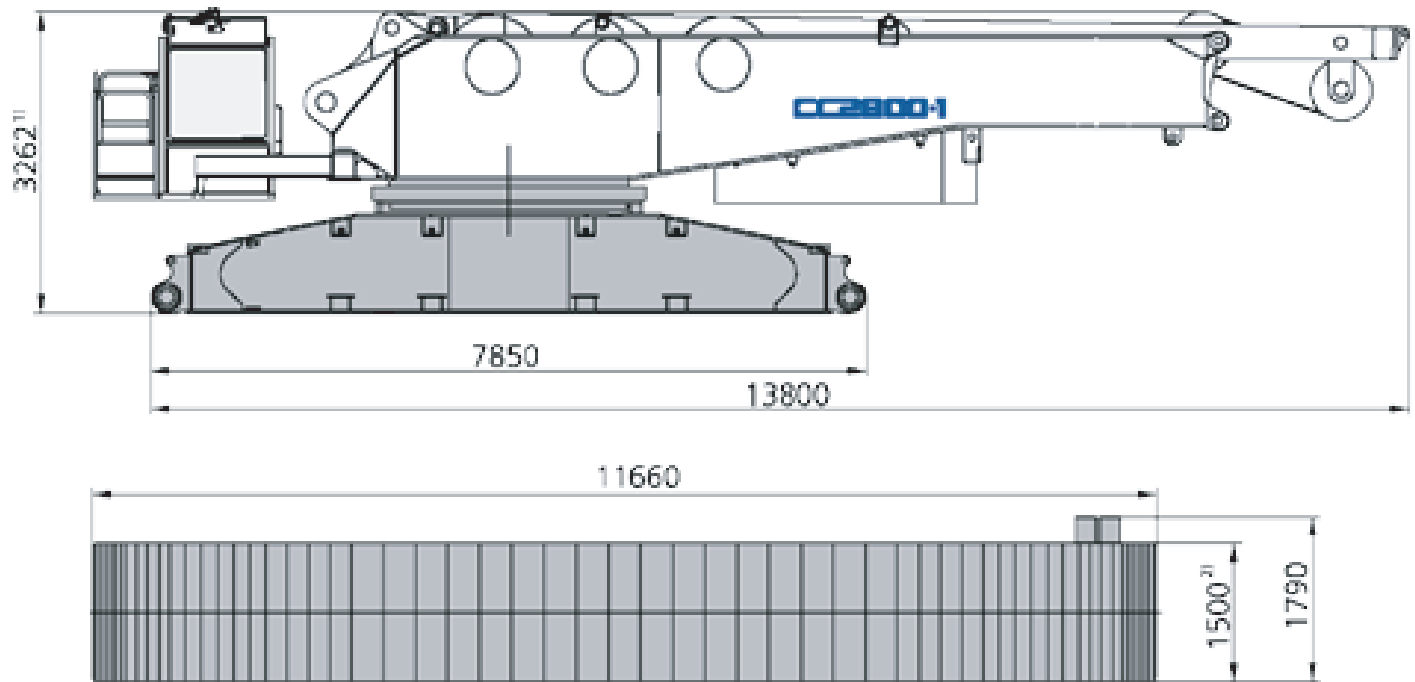


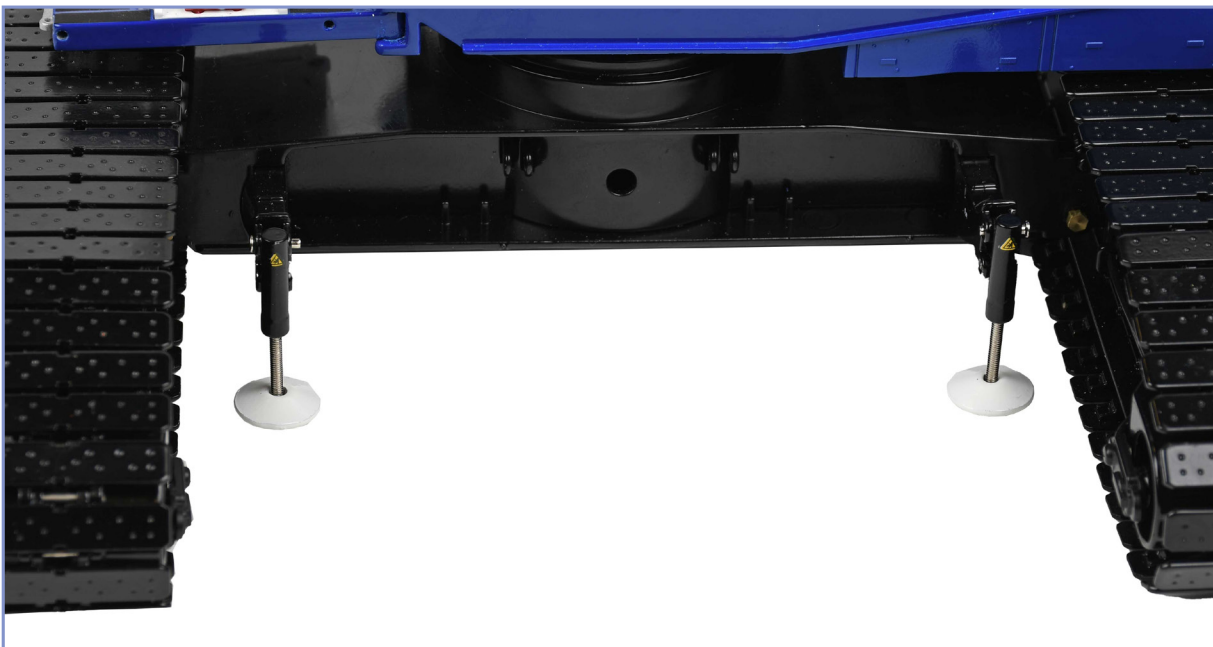
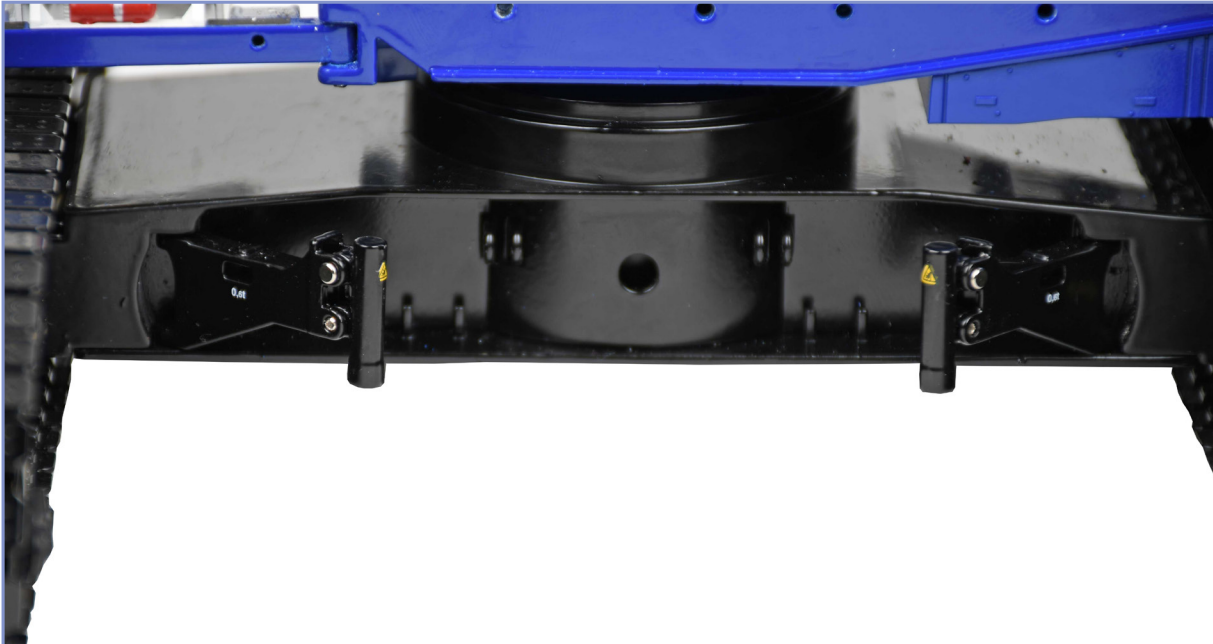
THE 600T HOOK BLOCK CAN BE TRANSFORMED INTO A 300T HOOK BLOCK BY REMOVING ONE OF THE TWO SHEAVE BLOCKS.





DETACHABLE CRAWLER TRACKS FOR  
A REALISTIC TRANSPORT MODE.





PIN THE CAR BODY OUTRIGGERS  
IN PLACE WITH PINS FROM BAG P3.

AND SCREW THE OUTRIGGER PADS  
IN THE CYLINDERS.



Industrial Merchandising Concepts B.V.

HEAD OFFICE  
Peppelkade 23  
3992 AL Houten  
The Netherlands

+31 (0)30 721 0661  
info@imcmodels.eu